



[Go to Product page](#)

Datasheet for ABIN1317611

## RBM42 Protein (AA 1-480) (GST tag)

### 1 Image

#### Overview

Quantity:	10 µg
Target:	RBM42
Protein Characteristics:	AA 1-480
Origin:	Human
Source:	Wheat germ
Protein Type:	Recombinant
Purification tag / Conjugate:	This RBM42 protein is labelled with GST tag.
Application:	ELISA, Western Blotting (WB), Affinity Purification (AP), Antibody Array (AA)

#### Product Details

Purpose:	RBM42 (Human) Recombinant Protein (P01)
Sequence:	MAGAGPAPGL PGAGGPVVPVPG PGAGIPGKSG EERLKEMEA E MALFEQEV LG APVPGIPTAV PAVPTVPTVP TVEAMQVPAA PVIRPIIATN TYQQVQQTLE ARAAAAATVV PPMVGGPPFV GPVGFPGDR SHLDSPEARE AMFLRRAAVA PQRAPILRPA FVPHVLQRAD SALSSAAAGP RPMALRPPHQ ALVGPPLPGP PGPPMMLPPM ARAPGPPLGS MAALRPPLEE PAAPRELGLG LGLGLKEKEE AVVAAAAGLE EASAAVAVGA GGAPAGPAVI GPSLPLALAM PLPEPEPLPL PLEVVRGLLP PLRIPELLSL RPRRPRRPE PPPGLMALEV PEPLGEDKKK GKPEKLRKI RTAAGSSWED PSLLEWDADD FRIFCGDLGN EVNDDILARA FSRFPSFLKA KVIRDKRTGK TKGYGFVSFK DPSDYVRAMR EMNGKYVGSR PIKLRKSMWK DRNLDVVRKK QKEKKKLGLR
Characteristics:	Human RBM42 full-length ORF ( NP_077297.2, 1 a.a. - 480 a.a.) recombinant protein with GST-tag at N-terminal.

## Product Details

---

Purification: in vitro wheat germ expression system

## Target Details

---

Target: RBM42

Alternative Name: RBM42 ([RBM42 Products](#))

Background: Full Gene Name: RNA binding motif protein 42  
Synonyms: MGC10433

Gene ID: 79171

NCBI Accession: [NM\\_024321](#)

## Application Details

---

Application Notes: Optimal working dilution should be determined by the investigator.

Comment: Preparation method: in vitro, wheat germ expression system  
Product Quality tested by: 12.5% SDS-PAGE Stained with Coomassie Blue.

Restrictions: For Research Use only

## Handling

---

Buffer: 50 mM Tris-HCl, 10 mM reduced Glutathione, pH =8.0 in the elution buffer.

Handling Advice: Aliquot to avoid repeated freezing and thawing.

Storage: -80 °C

Storage Comment: Best use within three months from the date of receipt of this protein.

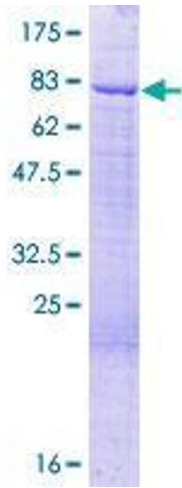


Image 1.