



[Go to Product page](#)

Datasheet for ABIN1317622
RBM6 Protein (AA 1-601) (GST tag)

1 Image

Overview

Quantity:	25 µg
Target:	RBM6
Protein Characteristics:	AA 1-601
Origin:	Human
Source:	Wheat germ
Protein Type:	Recombinant
Purification tag / Conjugate:	This RBM6 protein is labelled with GST tag.
Application:	ELISA, Western Blotting (WB), Affinity Purification (AP), Antibody Array (AA)

Product Details

Purpose:	RBM6 (Human) Recombinant Protein (P01)
Sequence:	<p>MIQDKEVTLE YVSSLDWFYC KRCKANIGGH RSSCSFCKNP REVTEAKQEL ITYPQPQKTS IPAPLEKQPN QPLRPADKEP EPRKREEGQE SRLGHQKREA ERYLPPSRRE GPTFRRDRER ESWSGETRQD GESKTIMLKR IYRSTPPEVI VEVLEPYVRL TTANVRIKN RTGPMGHTYG FIDLDSHAEA LRVVKILQNL DPPFSIDGKM VAVNLATGKR RNDSGDHS DH MHYYQGKKYF RDRRGGRNS DWSSDTNRQG QQSSSDCYIY DSATGYYYDP LAGTYYPNT QQEVVYPQDP GLPEEEEEIKE KKPTSQ GKSS SKKEMSKRDG KEKKDRGVTR FQENASEGKA PAEDVFKKPL PPTVKKEESP PPPKVVNPLI GLLGEYGGDS DYEEEEEEEQ TPPPQRPTAQ PQRREEQTKK ENEEDKLTDW NKLACLLCRR QFPNKEVLIK HQLSDLHKQ NLEIHRKIKQ SEQELAYLER REREGKFKGR GNDRREKLQS FDSPERKRIK YSRETDSDRK LVDKEDIDTS SKGGCVQAT GWRKGTGLGY GHPGLASSEE AEGRMRGPSV GASGRTSKRQ SNETYRDAVR RVMFARYKEL D</p>
Characteristics:	Human RBM6 full-length ORF (AAH46643.1, 1 a.a. - 601 a.a.) recombinant protein with GST-tag

Product Details

at N-terminal.

Purification: in vitro wheat germ expression system

Target Details

Target: RBM6

Alternative Name: RBM6 ([RBM6 Products](#))

Background: Full Gene Name: RNA binding motif protein 6
Synonyms: 3G2,DEF-3,DEF3,DKFZp686B0877,FLJ36517,HLC-11,NY-LU-12,g16

Gene ID: 10180

Application Details

Application Notes: Optimal working dilution should be determined by the investigator.

Comment: Preparation method: in vitro, wheat germ expression system
Product Quality tested by: 12.5% SDS-PAGE Stained with Coomassie Blue.

Restrictions: For Research Use only

Handling

Buffer: 50 mM Tris-HCl, 10 mM reduced Glutathione, pH =8.0 in the elution buffer.

Handling Advice: Aliquot to avoid repeated freezing and thawing.

Storage: -80 °C

Storage Comment: Best use within three months from the date of receipt of this protein.

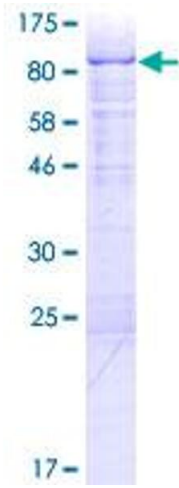


Image 1.