



[Go to Product page](#)

Datasheet for ABIN1317629

RBM8A Protein (AA 1-174) (GST tag)

1 Image

Overview

Quantity:	10 µg
Target:	RBM8A
Protein Characteristics:	AA 1-174
Origin:	Human
Source:	Wheat germ
Protein Type:	Recombinant
Purification tag / Conjugate:	This RBM8A protein is labelled with GST tag.
Application:	ELISA, Western Blotting (WB), Affinity Purification (AP), Antibody Array (AA)

Product Details

Purpose:	RBM8A (Human) Recombinant Protein (P02)
Sequence:	MADVLDLHEA GGEDFAMDED GDESIHKLKE KAKKRKGRGF GSEEGSRARM REDYDSVEQD GDEPGPQRSV EGWILFVTGV HEEATEEDIH DKFAEYGEIK NIHLNLDVRT GYLKGYTLVE YETYKEAQAA MEGLNGQDLM GQPISVDWCF VRGPPKGKRR GRRRRSRSPD RRRR
Characteristics:	Human RBM8A full-length ORF (NP_005096.1, 1 a.a. - 174 a.a.) recombinant protein with GST-tag at N-terminal.
Purification:	in vitro wheat germ expression system

Target Details

Target:	RBM8A
Alternative Name:	RBM8A (RBM8A Products)

Target Details

Background:	Full Gene Name: RNA binding motif protein 8A Synonyms: BOV-1A,BOV-1B,BOV-1C,MDS014,RBM8,RBM8B,Y14,ZNRP,ZRNP1
Gene ID:	9939
NCBI Accession:	NM_005105

Application Details

Application Notes:	Optimal working dilution should be determined by the investigator.
Comment:	Preparation method: in vitro, wheat germ expression system Product Quality tested by: 12.5% SDS-PAGE Stained with Coomassie Blue.
Restrictions:	For Research Use only

Handling

Buffer:	50 mM Tris-HCl, 10 mM reduced Glutathione, pH =8.0 in the elution buffer.
Handling Advice:	Aliquot to avoid repeated freezing and thawing.
Storage:	-80 °C
Storage Comment:	Best use within three months from the date of receipt of this protein.

Images

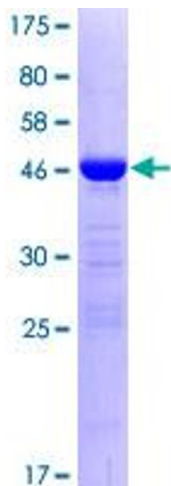


Image 1.