



[Go to Product page](#)

Datasheet for ABIN1317638

RBMXL2 Protein (AA 1-90) (GST tag)

1 Image

Overview

| | |
|-------------------------------|---|
| Quantity: | 10 µg |
| Target: | RBMXL2 |
| Protein Characteristics: | AA 1-90 |
| Origin: | Human |
| Source: | Wheat germ |
| Protein Type: | Recombinant |
| Purification tag / Conjugate: | This RBMXL2 protein is labelled with GST tag. |
| Application: | ELISA, Western Blotting (WB), Affinity Purification (AP), Antibody Array (AA) |

Product Details

| | |
|------------------|---|
| Purpose: | HNRNPG-T (Human) Recombinant Protein (Q01) |
| Sequence: | MVEADRPGLK FIGGLNLETD EKALEAEFGK YGRIVEVLLM KDRETNKSRG FAFVTFESPA DAKAAARDMN GKSLDGKAIK VAQATKPAFE |
| Characteristics: | Human HNRNPG-T partial ORF (NP_055284, 1 a.a. - 90 a.a.) recombinant protein with GST-tag at N-terminal. |
| Purification: | in vitro wheat germ expression system |

Target Details

| | |
|-------------------|--|
| Target: | RBMXL2 |
| Alternative Name: | RBMXL2 (RBMXL2 Products) |

Target Details

| | |
|-----------------|---|
| Background: | Full Gene Name: RNA binding motif protein, X-linked-like 2 Synonyms: HNRNPG-T,HNRNPGT,HNRPGT |
| Gene ID: | 27288 |
| NCBI Accession: | NM_014469 |

Application Details

| | |
|--------------------|--|
| Application Notes: | Optimal working dilution should be determined by the investigator. |
| Comment: | Preparation method: in vitro, wheat germ expression system Product Quality tested by: 12.5% SDS-PAGE Stained with Coomassie Blue. |
| Restrictions: | For Research Use only |

Handling

| | |
|------------------|---|
| Buffer: | 50 mM Tris-HCl, 10 mM reduced Glutathione, pH =8.0 in the elution buffer. |
| Handling Advice: | Aliquot to avoid repeated freezing and thawing. |
| Storage: | -80 °C |
| Storage Comment: | Best use within three months from the date of receipt of this protein. |

Images

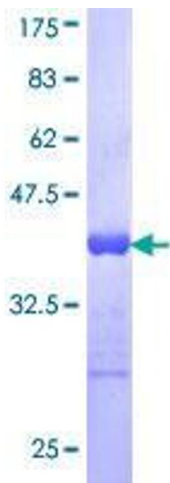


Image 1.