



[Go to Product page](#)

Datasheet for ABIN1317681  
**RCAN3 Protein (AA 1-241) (GST tag)**

1 Image

Overview

Quantity:	25 µg
Target:	RCAN3
Protein Characteristics:	AA 1-241
Origin:	Human
Source:	Wheat germ
Protein Type:	Recombinant
Purification tag / Conjugate:	This RCAN3 protein is labelled with GST tag.
Application:	ELISA, Western Blotting (WB), Affinity Purification (AP), Antibody Array (AA)

Product Details

Purpose:	DSCR1L2 (Human) Recombinant Protein (P01)
Sequence:	MLRDTMKSWN DSQSDLCSTD QEEEEEMIFG ENEGDLDEMM DLSDLPTSFL ACSVHEAVFE AREQKERFEA LFTIYDDQVT FQLFKSFRRV RINFSKPEAA ARARIELHET DFNGQKCLKLY FAQVQMSGEV RDKSYLLPPQ PVKQFLISPP ASPPVGWKQS EDAMPVINYD LLCVSKLGP GEKYELHAGT ESTPSVVVHV CESETEEEEE TKNPKQKIAQ TRRPDPPTAA LNEPQTFDCA L
Characteristics:	Human DSCR1L2 full-length ORF ( AAH35854, 1 a.a. - 241 a.a.) recombinant protein with GST-tag at N-terminal.
Purification:	in vitro wheat germ expression system

Target Details

Target:	RCAN3
---------	-------

## Target Details

Alternative Name:	RCAN3 ( <a href="#">RCAN3 Products</a> )
Background:	Full Gene Name: RCAN family member 3 Synonyms: DSCR1L2,MCIP3,RCN3,hRCN3
Gene ID:	11123

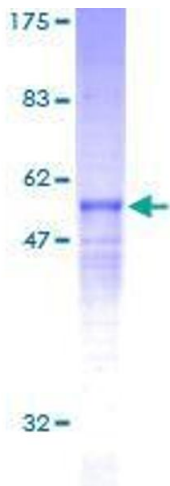
## Application Details

Application Notes:	Optimal working dilution should be determined by the investigator.
Comment:	Preparation method: in vitro, wheat germ expression system Product Quality tested by: 12.5% SDS-PAGE Stained with Coomassie Blue.
Restrictions:	For Research Use only

## Handling

Buffer:	50 mM Tris-HCl, 10 mM reduced Glutathione, pH =8.0 in the elution buffer.
Handling Advice:	Aliquot to avoid repeated freezing and thawing.
Storage:	-80 °C
Storage Comment:	Best use within three months from the date of receipt of this protein.

## Images



**Image 1.**