



Datasheet for ABIN1317684

RCBTB1 Protein (AA 2-90) (GST tag)



[Go to Product page](#)

1 Image

Overview

Quantity:	10 µg
Target:	RCBTB1
Protein Characteristics:	AA 2-90
Origin:	Human
Source:	Wheat germ
Protein Type:	Recombinant
Purification tag / Conjugate:	This RCBTB1 protein is labelled with GST tag.
Application:	ELISA, Western Blotting (WB), Affinity Purification (AP), Antibody Array (AA)

Product Details

Purpose:	RCBTB1 (Human) Recombinant Protein (Q01)
Sequence:	VDVGKWPIFT LLSPQEIASI RKACVFGTSA SEALYVTDND EVFVFGNLNYS NCLGTGDNQS TLVPPKLEGL CGKKIKLSLSY GSGPHVLLS
Characteristics:	Human RCBTB1 partial ORF (NP_060661.3, 2 a.a. - 90 a.a.) recombinant protein with GST-tag at N-terminal.
Purification:	in vitro wheat germ expression system

Target Details

Target:	RCBTB1
Alternative Name:	RCBTB1 (RCBTB1 Products)

Target Details

Background:	Full Gene Name: regulator of chromosome condensation (RCC1) and BTB (POZ) domain containing protein 1 Synonyms: CLLD7,CLLL7,GLP,MGC33184,RP11-185C18.1
Gene ID:	55213
NCBI Accession:	NM_018191

Application Details

Application Notes:	Optimal working dilution should be determined by the investigator.
Comment:	Preparation method: in vitro, wheat germ expression system Product Quality tested by: 12.5% SDS-PAGE Stained with Coomassie Blue.
Restrictions:	For Research Use only

Handling

Buffer:	50 mM Tris-HCl, 10 mM reduced Glutathione, pH =8.0 in the elution buffer.
Handling Advice:	Aliquot to avoid repeated freezing and thawing.
Storage:	-80 °C
Storage Comment:	Best use within three months from the date of receipt of this protein.

Images

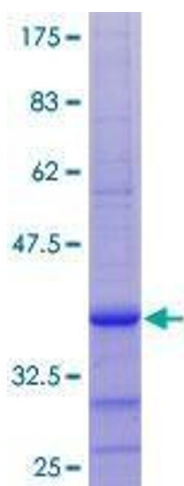


Image 1.