



[Go to Product page](#)

Datasheet for ABIN1317686

RCBTB2 Protein (AA 1-551) (GST tag)

1 Image

Overview

Quantity:	10 µg
Target:	RCBTB2
Protein Characteristics:	AA 1-551
Origin:	Human
Source:	Wheat germ
Protein Type:	Recombinant
Purification tag / Conjugate:	This RCBTB2 protein is labelled with GST tag.
Application:	Western Blotting (WB), ELISA, Affinity Purification (AP), Antibody Array (AA)

Product Details

Purpose:	RCBTB2 (Human) Recombinant Protein (P01)
Sequence:	MEEELPLFSG DSGKPVQATL SSLKMLDVGK WPIFSLCSEE ELQLIRQACV FGSAGNEVLY TTVNDEIFVL GTNCCGCLGL GDVQSTIEPR RLDSLNGKKI ACLSYGSGPH IVLATTEGEV FTWGHNAYSQ LGNGTTNHGL VPCHISTNLS NKQVIEVACG SYHSLVLTSD GEVFAWGYN SGQVGSSTV NQPIRRVTG CLQNKVVVTI ACGQMCCMAV VDTGEVYVWG YNGNGQLGLG NSGNQPTPCR VAALQGIRVQ RVACGYAHTL VLTDEGQVYA WGANSYGQLG TGNKSNQSYP TPVTVEKDRI IEIAACHSTH TSAAKTQGGH VYMWGQCRGQ SVILPHLTHF SCTDDVFACT ATPAVTWRLI SVEPDDHLTV AESLKREFDN PDTADLKFLV DGKYIYAHKV LLKIRCEHFR SSLEDNEDDI VEMSEFSYPV YRAFLEYLYT DSISLSPEEA VGLLDLATFY RENRLKLCQ QTIKQGICEE NAIALLSAV KYDAQDLEEF CFRFCINHLT VVTQTSGFAE MDHDLKKNFI SKASRVGAFK N
Characteristics:	Human RCBTB2 full-length ORF (NP_001259.1, 1 a.a. - 551 a.a.) recombinant protein with GST-

Product Details

tag at N-terminal.

Purification: in vitro wheat germ expression system

Target Details

Target: RCBTB2

Alternative Name: RCBTB2 ([RCBTB2 Products](#))

Background: Full Gene Name: regulator of chromosome condensation (RCC1) and BTB (POZ) domain containing protein 2
Synonyms: CHC1L

Gene ID: 1102

NCBI Accession: [NM_001268](#)

Application Details

Application Notes: Optimal working dilution should be determined by the investigator.

Comment: Preparation method: in vitro, wheat germ expression system
Product Quality tested by: 12.5% SDS-PAGE Stained with Coomassie Blue.

Restrictions: For Research Use only

Handling

Buffer: 50 mM Tris-HCl, 10 mM reduced Glutathione, pH =8.0 in the elution buffer.

Handling Advice: Aliquot to avoid repeated freezing and thawing.

Storage: -80 °C

Storage Comment: Best use within three months from the date of receipt of this protein.

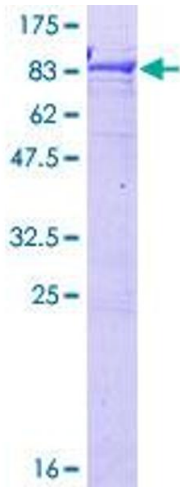


Image 1.