

Datasheet for ABIN1317708
RCSD1 Protein (AA 181-289) (GST tag)



[Go to Product page](#)

1 Image

Overview

Quantity:	10 µg
Target:	RCSD1
Protein Characteristics:	AA 181-289
Origin:	Human
Source:	Wheat germ
Protein Type:	Recombinant
Purification tag / Conjugate:	This RCSD1 protein is labelled with GST tag.
Application:	ELISA, Western Blotting (WB), Affinity Purification (AP), Antibody Array (AA)

Product Details

Purpose:	RCSD1 (Human) Recombinant Protein (Q01)
Sequence:	CGELGDFRAV ESSQQNGAKE EDGDEVLP SKAPGSPLSS EGAAGEGVRT LGPAEKPLR RSPSRTEKQE EDRATEEAKN GEKARRSSEE VDGQHPAQEE VPESPQTSG
Characteristics:	Human RCSD1 partial ORF (NP_443094.2, 181 a.a. - 289 a.a.) recombinant protein with GST-tag at N-terminal.
Purification:	in vitro wheat germ expression system

Target Details

Target:	RCSD1
Alternative Name:	RCSD1 (RCSD1 Products)

Target Details

Background:	Full Gene Name: RCSD domain containing 1 Synonyms: CAPZIP,MGC126585,MGC126611,MGC21854,MK2S4
Gene ID:	92241
NCBI Accession:	NM_052862

Application Details

Application Notes:	Optimal working dilution should be determined by the investigator.
Comment:	Preparation method: in vitro, wheat germ expression system Product Quality tested by: 12.5% SDS-PAGE Stained with Coomassie Blue.
Restrictions:	For Research Use only

Handling

Buffer:	50 mM Tris-HCl, 10 mM reduced Glutathione, pH =8.0 in the elution buffer.
Handling Advice:	Aliquot to avoid repeated freezing and thawing.
Storage:	-80 °C
Storage Comment:	Best use within three months from the date of receipt of this protein.

Images

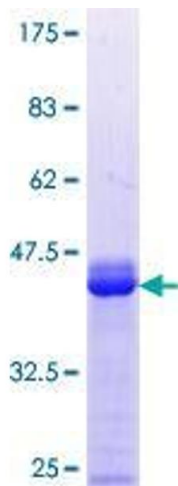


Image 1.