



[Go to Product page](#)

Datasheet for ABIN1317712

Recoverin Protein (RCVRN) (AA 1-200) (GST tag)

1 Image

Overview

Quantity:	10 µg
Target:	Recoverin (RCVRN)
Protein Characteristics:	AA 1-200
Origin:	Human
Source:	Wheat germ
Protein Type:	Recombinant
Purification tag / Conjugate:	This Recoverin protein is labelled with GST tag.
Application:	Western Blotting (WB), ELISA, Affinity Purification (AP), Antibody Array (AA)

Product Details

Purpose:	RCV1 (Human) Recombinant Protein (P02)
Sequence:	MGNSKSGALS KEILEELQLN TKFSEEELCS WYQSFLKDCP TGRITQQQFQ SIYAKFFPDT DPKAYAQHVF RSFDSNLDGT LDFKEYVIAL HMTTAGKTNQ KLEWAFSLYD VDGNGTISKN EVLEIVMAIF KMITPEDVKL LPDDENTPEK RAEKIWKYFG KNDDDKLTEK EFIEGTLANK EILRLIQFEP QKVKEKMKNA
Characteristics:	Human RCV1 full-length ORF (NP_002894.1, 1 a.a. - 200 a.a.) recombinant protein with GST-tag at N-terminal.
Purification:	in vitro wheat germ expression system

Target Details

Target:	Recoverin (RCVRN)
---------	-------------------

Target Details

Alternative Name:	RCVRN (RCVRN Products)
Background:	Full Gene Name: recoverin Synonyms: RCV1
Gene ID:	5957
NCBI Accession:	NM_002903
Pathways:	Regulation of G-Protein Coupled Receptor Protein Signaling, Phototransduction

Application Details

Application Notes:	Optimal working dilution should be determined by the investigator.
Comment:	Preparation method: in vitro, wheat germ expression system Product Quality tested by: 12.5% SDS-PAGE Stained with Coomassie Blue.
Restrictions:	For Research Use only

Handling

Buffer:	50 mM Tris-HCl, 10 mM reduced Glutathione, pH =8.0 in the elution buffer.
Handling Advice:	Aliquot to avoid repeated freezing and thawing.
Storage:	-80 °C
Storage Comment:	Best use within three months from the date of receipt of this protein.

Images

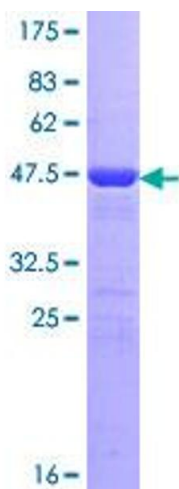


Image 1.