

Datasheet for ABIN1317714

Recoverin Protein (RCVRN) (AA 101-199) (GST tag)



[Go to Product page](#)

1 Image

Overview

Quantity:	10 µg
Target:	Recoverin (RCVRN)
Protein Characteristics:	AA 101-199
Origin:	Human
Source:	Wheat germ
Protein Type:	Recombinant
Purification tag / Conjugate:	This Recoverin protein is labelled with GST tag.
Application:	Western Blotting (WB), ELISA, Affinity Purification (AP), Antibody Array (AA)

Product Details

Purpose:	RCV1 (Human) Recombinant Protein (Q01)
Sequence:	KLEWAFSLYD VDGNGTISK N EVLEIVMAIF KMITPEDVKL LPDDENTPEK RAEKIWKYFG KNDDDKLTEK EFIEGTLANK EILRLIQFEP QKVKEKMK N
Characteristics:	Human RCV1 partial ORF (NP_002894.1, 101 a.a. - 199 a.a.) recombinant protein with GST-tag at N-terminal.
Purification:	in vitro wheat germ expression system

Target Details

Target:	Recoverin (RCVRN)
Alternative Name:	RCVRN (RCVRN Products)

Target Details

Background: Full Gene Name: recoverin
Synonyms: RCV1

Gene ID: 5957

NCBI Accession: [NM_002903](#)

Pathways: [Regulation of G-Protein Coupled Receptor Protein Signaling, Phototransduction](#)

Application Details

Application Notes: Optimal working dilution should be determined by the investigator.

Comment: Preparation method: in vitro, wheat germ expression system
Product Quality tested by: 12.5% SDS-PAGE Stained with Coomassie Blue.

Restrictions: For Research Use only

Handling

Buffer: 50 mM Tris-HCl, 10 mM reduced Glutathione, pH =8.0 in the elution buffer.

Handling Advice: Aliquot to avoid repeated freezing and thawing.

Storage: -80 °C

Storage Comment: Best use within three months from the date of receipt of this protein.

Images

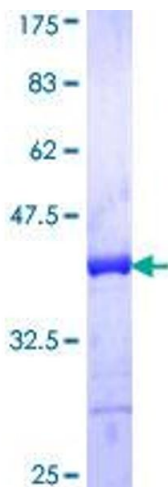


Image 1.