



[Go to Product page](#)

Datasheet for ABIN1317744
REC8 Protein (AA 1-110) (GST tag)

1 Image

Overview

Quantity:	10 µg
Target:	REC8
Protein Characteristics:	AA 1-110
Origin:	Human
Source:	Wheat germ
Protein Type:	Recombinant
Purification tag / Conjugate:	This REC8 protein is labelled with GST tag.
Application:	ELISA, Western Blotting (WB), Affinity Purification (AP), Antibody Array (AA)

Product Details

Purpose:	REC8L1 (Human) Recombinant Protein (Q01)
Sequence:	MFYYPNVLQR HTGCFATIWL AATRGSRLVK REYLRVNVVK TCEEILNYVL VRVQPPQPGL PRPRFSLYLS AQLQIGVIRV YSQQCQYLVE DIQHILERLH RAQLQIRIDM
Characteristics:	Human REC8L1 partial ORF (AAH04159.1, 1 a.a. - 110 a.a.) recombinant protein with GST-tag at N-terminal.
Purification:	in vitro wheat germ expression system

Target Details

Target:	REC8
Alternative Name:	REC8 (REC8 Products)

Target Details

Background:	Gene: REC8 homolog (yeast) Synonyms: HR21spB, MGC950, REC8L1, Rec8p
Gene ID:	9985

Application Details

Application Notes:	Optimal working dilution should be determined by the investigator.
Restrictions:	For Research Use only

Handling

Buffer:	50 mM Tris-HCl, 10 mM reduced Glutathione, pH =8.0 in the elution buffer.
Handling Advice:	Aliquot to avoid repeated freezing and thawing.
Storage:	-80 °C
Storage Comment:	Best use within three months from the date of receipt of this protein.

Images

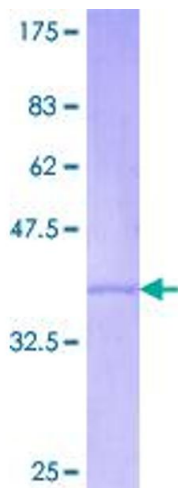


Image 1.