



[Go to Product page](#)

Datasheet for ABIN1317778
REG4 Protein (AA 1-158) (GST tag)

1 Image

Overview

Quantity:	10 µg
Target:	REG4
Protein Characteristics:	AA 1-158
Origin:	Human
Source:	Wheat germ
Protein Type:	Recombinant
Purification tag / Conjugate:	This REG4 protein is labelled with GST tag.
Application:	Western Blotting (WB), ELISA, Affinity Purification (AP), Antibody Array (AA)

Product Details

Purpose:	REG4 (Human) Recombinant Protein (P02)
Sequence:	MASRSMRLLL LLSCLAKTGV LGDIIMRPSC APGWFYHKS N CYGYFRKLRN WSDAELECQS YGNGAHLASI LSLKEASTIA EYISGYQRSQ PIWIGLHDPQ KRQWQWIDG AMYLYRSWSG KSMGGNKHCA EMSSNNNFLT WSSNECNKRQ HFLCKYRP
Characteristics:	Human REG4 full-length ORF (NP_114433.1, 1 a.a. - 158 a.a.) recombinant protein with GST-tag at N-terminal.
Purification:	in vitro wheat germ expression system

Target Details

Target:	REG4
Alternative Name:	REG4 (REG4 Products)

Target Details

Background:	Full Gene Name: regenerating islet-derived family, member 4 Synonyms: GISP,REG-IV,RELP
Gene ID:	83998
NCBI Accession:	NM_032044

Application Details

Application Notes:	Optimal working dilution should be determined by the investigator.
Comment:	Preparation method: in vitro, wheat germ expression system Product Quality tested by: 12.5% SDS-PAGE Stained with Coomassie Blue.
Restrictions:	For Research Use only

Handling

Buffer:	50 mM Tris-HCl, 10 mM reduced Glutathione, pH =8.0 in the elution buffer.
Handling Advice:	Aliquot to avoid repeated freezing and thawing.
Storage:	-80 °C
Storage Comment:	Best use within three months from the date of receipt of this protein.

Images

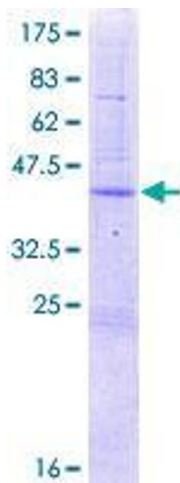


Image 1.