



[Go to Product page](#)

Datasheet for ABIN1317814

Ret Proto-Oncogene Protein (RET) (AA 25-458) (GST tag)

1 Image

Overview

Quantity:	10 µg
Target:	Ret Proto-Oncogene (RET)
Protein Characteristics:	AA 25-458
Origin:	Human
Source:	Wheat germ
Protein Type:	Recombinant
Purification tag / Conjugate:	This Ret Proto-Oncogene protein is labelled with GST tag.
Application:	Western Blotting (WB), ELISA, Affinity Purification (AP), Antibody Array (AA)

Product Details

Purpose:	RET (Human) Recombinant Protein (P01)
Sequence:	VALGLYFSRD AYWEKLYVDQ AAGTPLLYVH ALRDAPEEVP SFRLGQHLYG TYRTRLHENN WICIQEDTGL LYLNRSLDHS SWEKLSVRNR GFPLLTVYLK VFLSPTSLRE GECQWPGCAR VYFSFFNTSF PACSSLKPRE LCFPETRPSF RIRENRPPGT FHQFRLLPVQ FLCPNISVAY RLLEGEGLPF RCAPDSLEVS TRWALDREQR EKVELVAVCT VHAGAREEVV MVPFPVTVYD EDDSAPTFPA GVDTASAVVE FKRKEDTVVA TLRVFDADV PASGELVRRY TSTLLPGDTW AQQTRVEHW PNETSQANG SFVRATVHDY RLVLNRNLSI SENRTMQLAV LVNDSDFQGP GAGVLLHFN VSVLPVSLHL PSTYLSVSR RARRFAQIGK VCVENCLADL TGDAVSGRDE ARSSGLGSQK HPGS
Characteristics:	Human RET full-length ORF (AAH03072, 25 a.a. - 458 a.a.) recombinant protein with GST-tag at N-terminal.

Product Details

Purification: in vitro wheat germ expression system

Target Details

Target: Ret Proto-Oncogene (RET)

Alternative Name: RET ([RET Products](#))

Background: Full Gene Name: ret proto-oncogene
Synonyms: CDHF12,HSCR1,MEN2A,MEN2B,MTC1,PTC,RET-ELE1,RET51

Gene ID: 5979

Pathways: [RTK Signaling](#), [Dopaminergic Neurogenesis](#), [Regulation of Cell Size](#), [Tube Formation](#)

Application Details

Application Notes: Optimal working dilution should be determined by the investigator.

Comment: Preparation method: in vitro, wheat germ expression system
Product Quality tested by: 12.5% SDS-PAGE Stained with Coomassie Blue.

Restrictions: For Research Use only

Handling

Buffer: 50 mM Tris-HCl, 10 mM reduced Glutathione, pH =8.0 in the elution buffer.

Handling Advice: Aliquot to avoid repeated freezing and thawing.

Storage: -80 °C

Storage Comment: Best use within three months from the date of receipt of this protein.

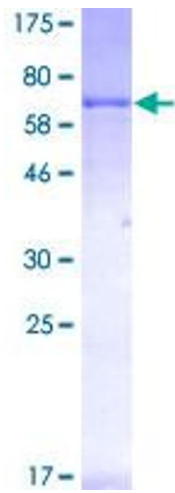


Image 1.