



[Go to Product page](#)

Datasheet for ABIN1317816

Ret Proto-Oncogene Protein (RET) (AA 361-458) (GST tag)

1 Image

Overview

Quantity:	10 µg
Target:	Ret Proto-Oncogene (RET)
Protein Characteristics:	AA 361-458
Origin:	Human
Source:	Wheat germ
Protein Type:	Recombinant
Purification tag / Conjugate:	This Ret Proto-Oncogene protein is labelled with GST tag.
Application:	Western Blotting (WB), ELISA, Affinity Purification (AP), Antibody Array (AA)

Product Details

Purpose:	RET (Human) Recombinant Protein (Q01)
Sequence:	NLSISENRTM QLAVLVNDSDFQGPAGVLL LHFNVSVLPV SLHLPSTYSL SVSRRARRFA QIGKVCVENC LADLTGDAVS GRDEARSSGL GSQKHPGS
Characteristics:	Human RET partial ORF (AAH03072, 361 a.a. - 458 a.a.) recombinant protein with GST-tag at N-terminal.
Purification:	in vitro wheat germ expression system

Target Details

Target:	Ret Proto-Oncogene (RET)
Alternative Name:	RET (RET Products)

Target Details

Background:	Full Gene Name: ret proto-oncogene Synonyms: CDHF12,HSCR1,MEN2A,MEN2B,MTC1,PTC,RET-ELE1,RET51
Gene ID:	5979
Pathways:	RTK Signaling , Dopaminergic Neurogenesis , Regulation of Cell Size , Tube Formation

Application Details

Application Notes:	Optimal working dilution should be determined by the investigator.
Comment:	Preparation method: in vitro, wheat germ expression system Product Quality tested by: 12.5% SDS-PAGE Stained with Coomassie Blue.
Restrictions:	For Research Use only

Handling

Buffer:	50 mM Tris-HCl, 10 mM reduced Glutathione, pH =8.0 in the elution buffer.
Handling Advice:	Aliquot to avoid repeated freezing and thawing.
Storage:	-80 °C
Storage Comment:	Best use within three months from the date of receipt of this protein.

Images

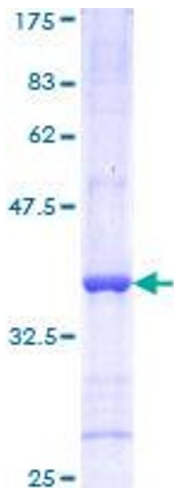


Image 1.