



[Go to Product page](#)

Datasheet for ABIN1317869  
**RFT1 Protein (AA 1-541) (GST tag)**

1 Image

Overview

Quantity:	25 µg
Target:	RFT1
Protein Characteristics:	AA 1-541
Origin:	Human
Source:	Wheat germ
Protein Type:	Recombinant
Purification tag / Conjugate:	This RFT1 protein is labelled with GST tag.
Application:	ELISA, Western Blotting (WB), Affinity Purification (AP), Antibody Array (AA)

Product Details

Purpose:	RFT1 (Human) Recombinant Protein (P01)
Sequence:	MGSQEVLGHA ARLASSGLLL QVLFRLITFV LNAFILRFLS KEIVGVVNVNR LTLLYSTTLF LAREAFRRAC LSGGTQRDWS QTLNLLWLTV PLGVFWSLFL GWIWLQLLEV PDPNVVPHYA TGVVLFGLSA VVELLGEPFW VLAQAHMFKV LK VIAESLSV ILKSVLTAFL VLWLPHWGLY IFSLAQLFYT TVLVLCYVIY FTKLLGSPES TKLQTLVSR ITDLLPNITR NGAFINWKEA KLTWSFFKQS FLKQILTEGE RYVMTFLNVL NFGDQGVYDI VNNLGSLVAR LIFQPIEESF YIFFAKVLER GKDATLQKQE DVAVAAAVLE SLLKLALLAG LTITVFGFAY SQLALDIYGG TMLSSSGSPV LLRSYCLYVL LLAINGVTEC FTFAAMSKEE VDRYNFVMLA LSSSFLVLSY LLTRWCGSVG FILANCFNMG IRITQSLCFI HRYYYRSPHR PLAGLHLSPV LLGTFALSGG VTAVSEVFLC CEQGWPARLA HIAVGAFCLG ATLGTAFLTE TKLIHFLRTQ LGVPRRTDKM T
Characteristics:	Human RFT1 full-length ORF ( NP_443091.1, 1 a.a. - 541 a.a.) recombinant protein with GST-tag at N-terminal.

## Product Details

---

Purification: in vitro wheat germ expression system

## Target Details

---

Target: RFT1

Alternative Name: RFT1 ([RFT1 Products](#))

Background: Full Gene Name: RFT1 homolog (*S. cerevisiae*)  
Synonyms: CDG1N,DKFZp667J092,FLJ25945

Gene ID: 91869

NCBI Accession: [NM\\_052859](#)

## Application Details

---

Application Notes: Optimal working dilution should be determined by the investigator.

Comment: Preparation method: in vitro, wheat germ expression system  
Product Quality tested by: 12.5% SDS-PAGE Stained with Coomassie Blue.

Restrictions: For Research Use only

## Handling

---

Buffer: 50 mM Tris-HCl, 10 mM reduced Glutathione, pH =8.0 in the elution buffer.

Handling Advice: Aliquot to avoid repeated freezing and thawing.

Storage: -80 °C

Storage Comment: Best use within three months from the date of receipt of this protein.

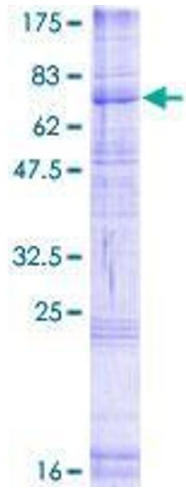


Image 1.