

Datasheet for ABIN1317872

RFWD2 Protein (AA 632-731) (GST tag)[Go to Product page](#)**1** Image

Overview

Quantity:	10 µg
Target:	RFWD2
Protein Characteristics:	AA 632-731
Origin:	Human
Source:	Wheat germ
Protein Type:	Recombinant
Purification tag / Conjugate:	This RFWD2 protein is labelled with GST tag.
Application:	ELISA, Western Blotting (WB), Affinity Purification (AP), Antibody Array (AA)

Product Details

Purpose:	RFWD2 (Human) Recombinant Protein (Q01)
Sequence:	CLRSFKGHIN EKNFVGLASN GDYIACGSEN NSLYLYYKGL SKTLLTFKFD TVKSVLDKDR KEDDTNEFVS AVCWRALPDG ESNVLIAANS QGTIKVLELV
Characteristics:	Human RFWD2 partial ORF (NP_071902, 632 a.a. - 731 a.a.) recombinant protein with GST-tag at N-terminal.
Purification:	in vitro wheat germ expression system

Target Details

Target:	RFWD2
Alternative Name:	RFWD2 (RFWD2 Products)

Target Details

Background: Full Gene Name: ring finger and WD repeat domain 2
Synonyms: COP1,FLJ10416,RNF200

Gene ID: 64326

NCBI Accession: [NM_022457](#)

Pathways: [Photoperiodism](#)

Application Details

Application Notes: Optimal working dilution should be determined by the investigator.

Comment: Preparation method: in vitro, wheat germ expression system
Product Quality tested by: 12.5% SDS-PAGE Stained with Coomassie Blue.

Restrictions: For Research Use only

Handling

Buffer: 50 mM Tris-HCl, 10 mM reduced Glutathione, pH =8.0 in the elution buffer.

Handling Advice: Aliquot to avoid repeated freezing and thawing.

Storage: -80 °C

Storage Comment: Best use within three months from the date of receipt of this protein.

Images

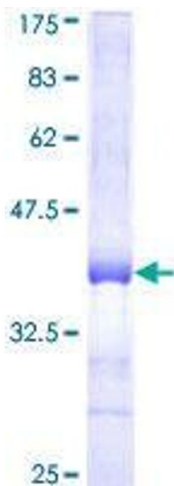


Image 1.