



[Go to Product page](#)

Datasheet for ABIN1317892

RFX6 Protein (AA 1-928) (GST tag)

1 Image

Overview

Quantity:	25 µg
Target:	RFX6
Protein Characteristics:	AA 1-928
Origin:	Human
Source:	Wheat germ
Protein Type:	Recombinant
Purification tag / Conjugate:	This RFX6 protein is labelled with GST tag.
Application:	ELISA, Western Blotting (WB), Affinity Purification (AP), Antibody Array (AA)

Product Details

Purpose:	RFXDC1 (Human) Recombinant Protein (P01)
Sequence:	MAKVPKLEDT FLQAQPAPQL SPGIQEDCCV QLLGKGLLVY PEETVYLAAE GQPGGEQGGG EKGEDPELPG AVKSEMHLNN GNFSSSEEDA DNHDSKTKAA DQYLSQKKT I TQIVKDKKKQ TQLTLQWLEE NYIVCEGVCL PRCILYAHYL DFCRKEKLEP ACAATFGKTI RQKFPLLTR RLGTRGHSKY HYYGIGIKES SAYYHSVYSG KGLTRFSGSK LKNEGGFTRK YSLSSKTGTL LPEFPSAHL VYQGCISKDK VDTLIMMYKT HCQCILDNAI NGNFEEIQHF LLHFWQGMPD HLLPLENPV IIDIFCVCD S ILYKVLTDVL IPATMQEMPE SLLADIRNFA KNWEQWVSS LENLPEALTD KKIPIVRRFV SSLKRQTSFL HLAQIARPAL FDQHVNSMV SDIERVDLNS IGSQALLTIS GSTDTESGIY TEHDSITVFQ ELKDLLKNA TVEAFIEWLD TVVEQRVIKT SKQNGRSLKK RAQDFLLKWS FFGARVMHNL TLNASSFGS FHLIRMLLDE YILLAMETQF NNDKEQELQN LLDKYMKNSD ASKAAFTASP SSCFLANRNK GSMVSSDAVK NESHVETTYL PLPSSQPGGL GPALHQFPAG NTDNMPLTGQ MELSQIAGHL MTPPISPAMA SRGSVINQGP

Product Details

MAGRPPSVGP VLSAPSHCST YPEPIYPALP QANHDFYSTS SNYQTVFRAQ PHSTSGLYPH
HTEHGRCMAW TEQQLSRDFF SGSCAGSPYN SRPPSSYGPS LQAQDSHNMQ FLNTGSFNFL
SNTGAASCQG ATLPNPNPNG YYGSNINYPE SHRLGSMVNQ HVSVISSIRS LPPYSDIHDP
LNILDDSGRK QTSSFYTDTS SPVACRTPVL ASSLQTIPIPS SSSQCMYGTS NQYPAQETLD
SHGTSSREMV SSLPPINTVF MGTAAGGT

Characteristics: Human RFXDC1 full-length ORF (NP_775831.1, 1 a.a. - 928 a.a.) recombinant protein with GST-tag at N-terminal.

Purification: in vitro wheat germ expression system

Target Details

Target: RFX6

Alternative Name: RFX6 ([RFX6 Products](#))

Background: Full Gene Name: regulatory factor X, 6
Synonyms: MGC33442,RFXDC1,dJ955L16.1

Gene ID: 222546

NCBI Accession: [NM_173560](#)

Pathways: [Carbohydrate Homeostasis](#)

Application Details

Application Notes: Optimal working dilution should be determined by the investigator.

Comment: Preparation method: in vitro, wheat germ expression system
Product Quality tested by: 12.5% SDS-PAGE Stained with Coomassie Blue.

Restrictions: For Research Use only

Handling

Buffer: 50 mM Tris-HCl, 10 mM reduced Glutathione, pH =8.0 in the elution buffer.

Handling Advice: Aliquot to avoid repeated freezing and thawing.

Storage: -80 °C

Storage Comment: Best use within three months from the date of receipt of this protein.

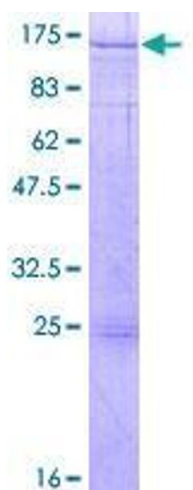


Image 1.