



[Go to Product page](#)

Datasheet for ABIN1317916

## Regucalcin Protein (RGN) (AA 200-299) (GST tag)

### 1 Image

#### Overview

Quantity:	10 µg
Target:	Regucalcin (RGN)
Protein Characteristics:	AA 200-299
Origin:	Human
Source:	Wheat germ
Protein Type:	Recombinant
Purification tag / Conjugate:	This Regucalcin protein is labelled with GST tag.
Application:	Western Blotting (WB), ELISA, Affinity Purification (AP), Antibody Array (AA)

#### Product Details

Purpose:	RGN (Human) Recombinant Protein (Q01)
Sequence:	EQIPDGMCID AEGKLWVACY NGGRVIRLDP VTGKRLQTVK LPVDKTTSCC FGGKNYSEMY VTCARDGMDP ELLRQPEAG GIFKITGLGV KGIAPYSYAG
Characteristics:	Human RGN partial ORF ( NP_004674.1, 200 a.a. - 299 a.a.) recombinant protein with GST-tag at N-terminal.
Purification:	in vitro wheat germ expression system

#### Target Details

Target:	Regucalcin (RGN)
Alternative Name:	RGN ( <a href="#">RGN Products</a> )

## Target Details

Background:	Full Gene Name: regucalcin (senescence marker protein-30) Synonyms: RC,SMP30
Gene ID:	9104
NCBI Accession:	<a href="#">NM_004683</a>

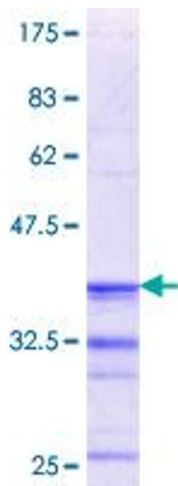
## Application Details

Application Notes:	Optimal working dilution should be determined by the investigator.
Comment:	Preparation method: in vitro, wheat germ expression system Product Quality tested by: 12.5% SDS-PAGE Stained with Coomassie Blue.
Restrictions:	For Research Use only

## Handling

Buffer:	50 mM Tris-HCl, 10 mM reduced Glutathione, pH =8.0 in the elution buffer.
Handling Advice:	Aliquot to avoid repeated freezing and thawing.
Storage:	-80 °C
Storage Comment:	Best use within three months from the date of receipt of this protein.

## Images



**Image 1.**