



[Go to Product page](#)

Datasheet for ABIN1317920

RGS1 Protein (AA 1-196) (GST tag)

1 Image

Overview

Quantity:	10 µg
Target:	RGS1
Protein Characteristics:	AA 1-196
Origin:	Human
Source:	Wheat germ
Protein Type:	Recombinant
Purification tag / Conjugate:	This RGS1 protein is labelled with GST tag.
Application:	Western Blotting (WB), ELISA, Affinity Purification (AP), Antibody Array (AA)

Product Details

Purpose:	RGS1 (Human) Recombinant Protein (P01)
Sequence:	MPGMFFSANP KELKGTTHSL LDDKMQRRP KTFGMDMKAY LRSMIPHLES GMKSSKSKDV LSAAEVMQWS QSLEKLLANQ TGQNVFGSFL KSEFSEENIE FWLACEDYKK TESDLLPRKA EEIYKAFVHL DAAKQINIDF RTRESTAKKI KAPTPTCFDE AQKVIYTLME KDSYPRFLKS DIYLNLLNDL QANSLK
Characteristics:	Human RGS1 full-length ORF (AAH15510, 1 a.a. - 196 a.a.) recombinant protein with GST-tag at N-terminal.
Purification:	in vitro wheat germ expression system

Target Details

Target:	RGS1
---------	------

Target Details

Alternative Name: RGS1 ([RGS1 Products](#))

Background: Full Gene Name: regulator of G-protein signaling 1
Synonyms: 1R20,BL34,IER1,IR20

Gene ID: 5996

Pathways: [MAPK Signaling](#), [Myometrial Relaxation and Contraction](#), [Regulation of G-Protein Coupled Receptor Protein Signaling](#), [CXCR4-mediated Signaling Events](#)

Application Details

Application Notes: Optimal working dilution should be determined by the investigator.

Comment: Preparation method: in vitro, wheat germ expression system
Product Quality tested by: 12.5% SDS-PAGE Stained with Coomassie Blue.

Restrictions: For Research Use only

Handling

Buffer: 50 mM Tris-HCl, 10 mM reduced Glutathione, pH =8.0 in the elution buffer.

Handling Advice: Aliquot to avoid repeated freezing and thawing.

Storage: -80 °C

Storage Comment: Best use within three months from the date of receipt of this protein.

Images

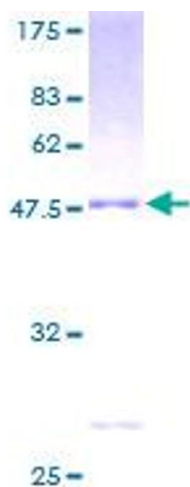


Image 1.