



[Go to Product page](#)

Datasheet for ABIN1317935

## RGS13 Protein (AA 60-159) (GST tag)

### 1 Image

#### Overview

Quantity:	10 µg
Target:	RGS13
Protein Characteristics:	AA 60-159
Origin:	Human
Source:	Wheat germ
Protein Type:	Recombinant
Purification tag / Conjugate:	This RGS13 protein is labelled with GST tag.
Application:	ELISA, Western Blotting (WB), Affinity Purification (AP), Antibody Array (AA)

#### Product Details

Purpose:	RGS13 (Human) Recombinant Protein (Q01)
Sequence:	NIQFWMACET YKKIASRWSR ISRAKKLYKI YIQPQSPREI NIDSSTRETI IRNIQEPTET CFEEAQKIVY MHMERDSYPR FLKSEMYQKL LKTMQSNNNSF
Characteristics:	Human RGS13 partial ORF ( NP_658912.1, 60 a.a. - 159 a.a.) recombinant protein with GST-tag at N-terminal.
Purification:	in vitro wheat germ expression system

#### Target Details

Target:	RGS13
Alternative Name:	RGS13 ( <a href="#">RGS13 Products</a> )

## Target Details

Background: Full Gene Name: regulator of G-protein signaling 13  
Synonyms: MGC17173

Gene ID: 6003

NCBI Accession: [NM\\_144766](#)

Pathways: [Regulation of G-Protein Coupled Receptor Protein Signaling](#)

## Application Details

Application Notes: Optimal working dilution should be determined by the investigator.

Comment: Preparation method: in vitro, wheat germ expression system  
Product Quality tested by: 12.5% SDS-PAGE Stained with Coomassie Blue.

Restrictions: For Research Use only

## Handling

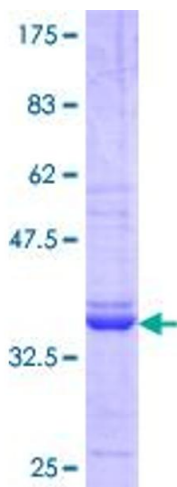
Buffer: 50 mM Tris-HCl, 10 mM reduced Glutathione, pH =8.0 in the elution buffer.

Handling Advice: Aliquot to avoid repeated freezing and thawing.

Storage: -80 °C

Storage Comment: Best use within three months from the date of receipt of this protein.

## Images



**Image 1.**