

Datasheet for ABIN1317939

RGS14 Protein (AA 468-566) (GST tag)



[Go to Product page](#)

1 Image

Overview

Quantity:	10 µg
Target:	RGS14
Protein Characteristics:	AA 468-566
Origin:	Human
Source:	Wheat germ
Protein Type:	Recombinant
Purification tag / Conjugate:	This RGS14 protein is labelled with GST tag.
Application:	ELISA, Western Blotting (WB), Affinity Purification (AP), Antibody Array (AA)

Product Details

Purpose:	RGS14 (Human) Recombinant Protein (Q01)
Sequence:	QDKATHPPPA SPSSLVKVPS SATGKRQTC D IEGLVELLNR VQSSGAHDQR GLLRKEDLVL PEFLQLPAQG PSSEETPPQT KSAAQPIGGS LNSTTDSAL
Characteristics:	Human RGS14 partial ORF (NP_006471, 468 a.a. - 566 a.a.) recombinant protein with GST-tag at N-terminal.
Purification:	in vitro wheat germ expression system

Target Details

Target:	RGS14
Alternative Name:	RGS14 (RGS14 Products)

Target Details

Background:	Full Gene Name: regulator of G-protein signaling 14 Synonyms:
Gene ID:	10636
NCBI Accession:	NM_006480
Pathways:	Myometrial Relaxation and Contraction , Regulation of G-Protein Coupled Receptor Protein Signaling , Platelet-derived growth Factor Receptor Signaling

Application Details

Application Notes:	Optimal working dilution should be determined by the investigator.
Comment:	Preparation method: in vitro, wheat germ expression system Product Quality tested by: 12.5% SDS-PAGE Stained with Coomassie Blue.
Restrictions:	For Research Use only

Handling

Buffer:	50 mM Tris-HCl, 10 mM reduced Glutathione, pH =8.0 in the elution buffer.
Handling Advice:	Aliquot to avoid repeated freezing and thawing.
Storage:	-80 °C
Storage Comment:	Best use within three months from the date of receipt of this protein.

Images

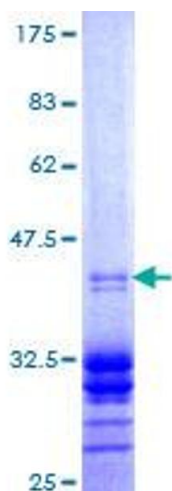


Image 1.