



[Go to Product page](#)

Datasheet for ABIN1317976

## RGS6 Protein (AA 207-306) (GST tag)

### 1 Image

#### Overview

Quantity:	10 µg
Target:	RGS6
Protein Characteristics:	AA 207-306
Origin:	Human
Source:	Wheat germ
Protein Type:	Recombinant
Purification tag / Conjugate:	This RGS6 protein is labelled with GST tag.
Application:	Western Blotting (WB), ELISA, Affinity Purification (AP), Antibody Array (AA)

#### Product Details

Purpose:	RGS6 (Human) Recombinant Protein (Q01)
Sequence:	PGCVNTTEMD IRKCRRLKNP QKVKKSVMYGV TEESQAQSPV HVLSQPIRKT TKEDIRKQIT FLNAQIDRHC LKMSKVAESL IAYTEQYVEY DPLITPAEPS
Characteristics:	Human RGS6 partial ORF ( NP_004287, 207 a.a. - 306 a.a.) recombinant protein with GST-tag at N-terminal.
Purification:	in vitro wheat germ expression system

#### Target Details

Target:	RGS6
Alternative Name:	RGS6 ( <a href="#">RGS6 Products</a> )

## Target Details

Background:	Full Gene Name: regulator of G-protein signaling 6 Synonyms: DKFZp313G1241,FLJ43552,GAP,MGC142132
Gene ID:	9628
NCBI Accession:	<a href="#">NM_004296</a>
Pathways:	<a href="#">Myometrial Relaxation and Contraction, Regulation of G-Protein Coupled Receptor Protein Signaling</a>

## Application Details

Application Notes:	Optimal working dilution should be determined by the investigator.
Comment:	Preparation method: in vitro, wheat germ expression system Product Quality tested by: 12.5% SDS-PAGE Stained with Coomassie Blue.
Restrictions:	For Research Use only

## Handling

Buffer:	50 mM Tris-HCl, 10 mM reduced Glutathione, pH =8.0 in the elution buffer.
Handling Advice:	Aliquot to avoid repeated freezing and thawing.
Storage:	-80 °C
Storage Comment:	Best use within three months from the date of receipt of this protein.

## Images

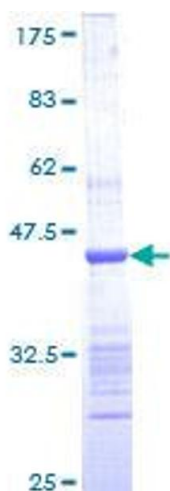


Image 1.