



[Go to Product page](#)

Datasheet for ABIN1317978

## RGS7 Protein (AA 1-487) (GST tag)

### 1 Image

#### Overview

Quantity:	10 µg
Target:	RGS7
Protein Characteristics:	AA 1-487
Origin:	Human
Source:	Wheat germ
Protein Type:	Recombinant
Purification tag / Conjugate:	This RGS7 protein is labelled with GST tag.
Application:	Western Blotting (WB), ELISA, Affinity Purification (AP), Antibody Array (AA)

#### Product Details

Purpose:	RGS7 (Human) Recombinant Protein (P01)
Sequence:	MAQGNNYGQT SNGVADESPN MLVYRKMEDV IARMQDEKNG IPIRTVKSFL SKIPSVFSGS DIVQWLIKNL TIEDPVEALH LGTLMAAHGY FFPISDHVLT LKDDGTFYRF QTPYFWPSNC WEPENTDYAV YLCKRTMQNK ARLELADYEA ESLARLQRAF ARKWEFIFMQ AEAQAKVDKK RDKIERKILD SQERAFWDVH RPVPGCVNTT EVDIKKSSRM RNPBKTRKSV YGLQNDIRSH SPTHPTPET KPTEDELQQ QIKYWQIQLD RHRLKMSKVA DSLLSYTEQY LEYDPFLLPP DPSNPWLSDD TTFWELEASK EPSQQRVKRW GFGMDEALKD PVGREQFLKF LESEFSSEN RFLAVEDLK KRPIKEVPSR VQEIWQEFLA PGAPSAINLD SKSYDKTTHN VKEPGRYTFE DAQEHYKLM KSDSYPRFIR SSAYQELLQA KKKSGNSMDR RTSFEKFAQN VGKSLTSKRL TSLAQS
Characteristics:	Human RGS7 full-length ORF ( NP_002915.2, 1 a.a. - 487 a.a.) recombinant protein with GST-tag at N-terminal.

## Product Details

---

Purification: in vitro wheat germ expression system

## Target Details

---

Target: RGS7

Alternative Name: RGS7 ([RGS7 Products](#))

Background: Full Gene Name: regulator of G-protein signaling 7  
Synonyms:

Gene ID: 6000

NCBI Accession: [NM\\_002924](#)

Pathways: [Myometrial Relaxation and Contraction](#), [Regulation of G-Protein Coupled Receptor Protein Signaling](#)

## Application Details

---

Application Notes: Optimal working dilution should be determined by the investigator.

Comment: Preparation method: in vitro, wheat germ expression system  
Product Quality tested by: 12.5% SDS-PAGE Stained with Coomassie Blue.

Restrictions: For Research Use only

## Handling

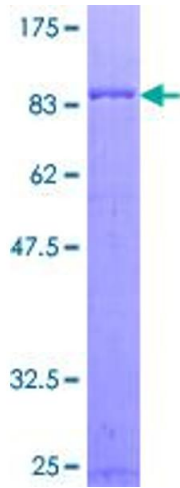
---

Buffer: 50 mM Tris-HCl, 10 mM reduced Glutathione, pH =8.0 in the elution buffer.

Handling Advice: Aliquot to avoid repeated freezing and thawing.

Storage: -80 °C

Storage Comment: Best use within three months from the date of receipt of this protein.



**Image 1.**