



[Go to Product page](#)

Datasheet for ABIN1317984

## RHAG Protein (AA 1-409) (GST tag)

### 1 Image

#### Overview

Quantity:	25 µg
Target:	RHAG
Protein Characteristics:	AA 1-409
Origin:	Human
Source:	Wheat germ
Protein Type:	Recombinant
Purification tag / Conjugate:	This RHAG protein is labelled with GST tag.
Application:	Western Blotting (WB), ELISA, Affinity Purification (AP), Antibody Array (AA)

#### Product Details

Purpose:	RHAG (Human) Recombinant Protein (P01)
Sequence:	MRFTFPLMAI VLEIAMIVLF GLFVEYETDQ TVLEQLNITK PTDMGIFFEL YPLFQDVHVM IFVGFGLMT FLKKYGFSSV GINLLVAALG LQWGTIVQGT LQSQQKFNI GIKNMINADF SAATVLISFG AVLGKTSPTQ MLIMTILEIV FFAHNEYLVS EIFKASDIGA SMTIHAFGAY FGLAVAGILY RSGLRKGREN EESAYYSDLF AMIGTLFLWM FWPSFNSAIA EPGDKQCRAI VNTYFSLAAC VLTAFAFSSL VEHRGKLMNV HIQNATLAGG VAVGTCADMA IHPFGSMIIG SIAGMVSVLG YKFLTPLFTT KLRIHDTCGV HNLHGLPGVV GGLAGIVAVA MGASNTSMAM QAAALGSSIG TAVVGGLMTG LILKLPLWGQ PSDQNCYDDS VYWKVPKTR
Characteristics:	Human RHAG full-length ORF ( AAH12605.1, 1 a.a. - 409 a.a.) recombinant protein with GST-tag at N-terminal.
Purification:	in vitro wheat germ expression system

## Target Details

Target:	RHAG
Alternative Name:	RHAG ( <a href="#">RHAG Products</a> )
Background:	Full Gene Name: Rh-associated glycoprotein Synonyms: CD241,RH2,RH50A,Rh50,Rh50GP,SLC42A1
Gene ID:	6005

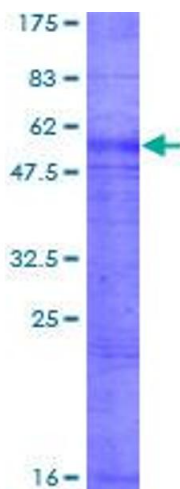
## Application Details

Application Notes:	Optimal working dilution should be determined by the investigator.
Comment:	Preparation method: in vitro, wheat germ expression system Product Quality tested by: 12.5% SDS-PAGE Stained with Coomassie Blue.
Restrictions:	For Research Use only

## Handling

Buffer:	50 mM Tris-HCl, 10 mM reduced Glutathione, pH =8.0 in the elution buffer.
Handling Advice:	Aliquot to avoid repeated freezing and thawing.
Storage:	-80 °C
Storage Comment:	Best use within three months from the date of receipt of this protein.

## Images



**Image 1.**