

Datasheet for ABIN1317985
RHBDD2 Protein (AA 1-223) (GST tag)



[Go to Product page](#)

1 Image

Overview

Quantity:	25 µg
Target:	RHBDD2
Protein Characteristics:	AA 1-223
Origin:	Human
Source:	Wheat germ
Protein Type:	Recombinant
Purification tag / Conjugate:	This RHBDD2 protein is labelled with GST tag.
Application:	ELISA, Western Blotting (WB), Affinity Purification (AP), Antibody Array (AA)

Product Details

Purpose:	RHBDD2 (Human) Recombinant Protein (P01)
Sequence:	MLGVTTVRSR MRRALVFGMV VPSVLVPWLL LGASWLIPQT SFLSNVCGLS IGLAYGLTYC YSIDLSEVA LKLDQTFPFS LMRRISVFKY VSGSSAERRA AQRKLNVPV GSYPTQSCHP HLSPSHVPSQ TQHASGQKLA SWPCTPGHM PTLPPYQPAS GLCYVQNHFG PNPTSSSVYP ASAGTSLGIQ PPTPVNSPGT VYSGALGTPG AAGSKESSRV PMP
Characteristics:	Human RHBDD2 full-length ORF (NP_001035547.1, 1 a.a. - 223 a.a.) recombinant protein with GST-tag at N-terminal.
Purification:	in vitro wheat germ expression system

Target Details

Target:	RHBDD2
---------	--------

Target Details

Alternative Name:	RHBDD2 (RHBDD2 Products)
Background:	Full Gene Name: rhomboid domain containing 2 Synonyms: NPD007,RHBDL7
Gene ID:	57414
NCBI Accession:	NM_001040457

Application Details

Application Notes:	Optimal working dilution should be determined by the investigator.
Comment:	Preparation method: in vitro, wheat germ expression system Product Quality tested by: 12.5% SDS-PAGE Stained with Coomassie Blue.
Restrictions:	For Research Use only

Handling

Buffer:	50 mM Tris-HCl, 10 mM reduced Glutathione, pH =8.0 in the elution buffer.
Handling Advice:	Aliquot to avoid repeated freezing and thawing.
Storage:	-80 °C
Storage Comment:	Best use within three months from the date of receipt of this protein.

Images

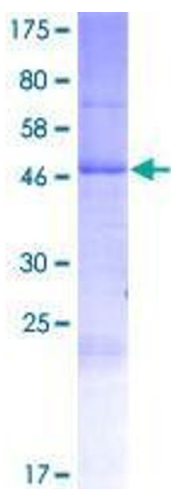


Image 1.