



[Go to Product page](#)

Datasheet for ABIN1317987

RHBDL1 Protein (AA 1-100) (GST tag)

1 Image

Overview

Quantity:	10 µg
Target:	RHBDL1
Protein Characteristics:	AA 1-100
Origin:	Human
Source:	Wheat germ
Protein Type:	Recombinant
Purification tag / Conjugate:	This RHBDL1 protein is labelled with GST tag.
Application:	ELISA, Western Blotting (WB), Affinity Purification (AP), Antibody Array (AA)

Product Details

Purpose:	RHBDL1 (Human) Recombinant Protein (Q01)
Sequence:	MGRVEDGGTT EELEDWDPGT SALPAPGIKQ GPREQTGTGP LSQKCWEPEP DAPSQPGPAL WSRGRARTQA LAGGSSLQQL DPENTGFIGA DTFTGLVHSH
Characteristics:	Human RHBDL1 partial ORF (NP_003952, 1 a.a. - 100 a.a.) recombinant protein with GST-tag at N-terminal.
Purification:	in vitro wheat germ expression system

Target Details

Target:	RHBDL1
Alternative Name:	RHBDL1 (RHBDL1 Products)

Target Details

Background: Gene: rhomboid, veinlet-like 1 (Drosophila)
Synonyms: RHBDL, RRP

Gene ID: 9028

NCBI Accession: [NM_003961](#)

Application Details

Application Notes: Optimal working dilution should be determined by the investigator.

Restrictions: For Research Use only

Handling

Buffer: 50 mM Tris-HCl, 10 mM reduced Glutathione, pH =8.0 in the elution buffer.

Handling Advice: Aliquot to avoid repeated freezing and thawing.

Storage: -80 °C

Storage Comment: Best use within three months from the date of receipt of this protein.

Images

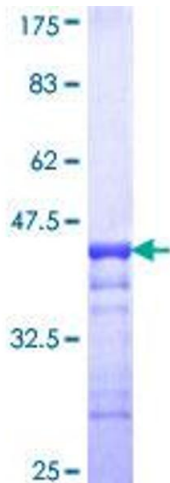


Image 1.