



[Go to Product page](#)

Datasheet for ABIN1317989

## RHBDL2 Protein (AA 1-121) (GST tag)

### 1 Image

#### Overview

Quantity:	10 µg
Target:	RHBDL2
Protein Characteristics:	AA 1-121
Origin:	Human
Source:	Wheat germ
Protein Type:	Recombinant
Purification tag / Conjugate:	This RHBDL2 protein is labelled with GST tag.
Application:	ELISA, Western Blotting (WB), Affinity Purification (AP), Antibody Array (AA)

#### Product Details

Purpose:	RHBDL2 (Human) Recombinant Protein (P01)
Sequence:	MNLNMGREMK EEEEEEEKMR EDGGGKDRAK SKKVHRIVSK WMLPEKSRGT YLERANCFPP PVFIISISLA ELAVFIYYAV WKPQKQWITL DTGILESFPFI YSPEKREEAW RFISYMLVHA G
Characteristics:	Human RHBDL2 full-length ORF ( AAH13103.1, 1 a.a. - 121 a.a.) recombinant protein with GST-tag at N-terminal.
Purification:	in vitro wheat germ expression system

#### Target Details

Target:	RHBDL2
Alternative Name:	RHBDL2 ( <a href="#">RHBDL2 Products</a> )

## Target Details

Background: Full Gene Name: rhomboid, veinlet-like 2 (Drosophila)  
Synonyms: MGC16997,RRP2

Gene ID: 54933

## Application Details

Application Notes: Optimal working dilution should be determined by the investigator.

Comment: Preparation method: in vitro, wheat germ expression system  
Product Quality tested by: 12.5% SDS-PAGE Stained with Coomassie Blue.

Restrictions: For Research Use only

## Handling

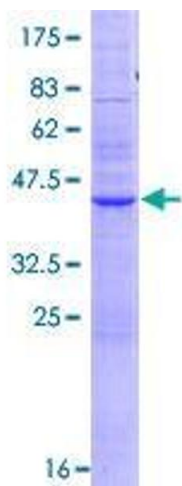
Buffer: 50 mM Tris-HCl, 10 mM reduced Glutathione, pH =8.0 in the elution buffer.

Handling Advice: Aliquot to avoid repeated freezing and thawing.

Storage: -80 °C

Storage Comment: Best use within three months from the date of receipt of this protein.

## Images



**Image 1.**