



[Go to Product page](#)

Datasheet for ABIN1317993

RHBDL3 Protein (AA 1-306) (GST tag)

1 Image

Overview

Quantity:	10 µg
Target:	RHBDL3
Protein Characteristics:	AA 1-306
Origin:	Human
Source:	Wheat germ
Protein Type:	Recombinant
Purification tag / Conjugate:	This RHBDL3 protein is labelled with GST tag.
Application:	ELISA, Western Blotting (WB), Affinity Purification (AP), Antibody Array (AA)

Product Details

Purpose:	RHBDL3 (Human) Recombinant Protein (P01)
Sequence:	MSNKRSNSFR QAILQGNRRRL SSKALLEEKGLSLSQRLIRH VAYETLPREI DRKWYYDSYT CCPPPWFMIT VTLLEVAFFL YNGVSLGQFV LQVTHPRYLK NSLVYHPQLR AQVWRYLTYI FMHAGIEHLG LNVVLQLLVG VPLEMVHGAT RIGLVYVAGV VAGSLAVSVA DMTAPVWGSS GGVYALVSAH LANIVMNWSG MKCQFKLLRM AVALICMSME FGRAWLRFH PSAYPPCPHP SFVAHLGGVA VGITLGVVVL RNYEQLRQDQ SLWWIFVAMY TVFVLFVFW NIFAYTLDDL KLPPPP
Characteristics:	Human RHBDL3 full-length ORF (AAI00979.1, 1 a.a. - 306 a.a.) recombinant protein with GST-tag at N-terminal.
Purification:	in vitro wheat germ expression system

Target Details

Target:	RHBDL3
Alternative Name:	RHBDL3 (RHBDL3 Products)
Background:	Full Gene Name: rhomboid, veinlet-like 3 (Drosophila) Synonyms: FLJ45582,MGC119300,MGC119301,RHBDL4,VRHO
Gene ID:	162494

Application Details

Application Notes:	Optimal working dilution should be determined by the investigator.
Comment:	Preparation method: in vitro, wheat germ expression system Product Quality tested by: 12.5% SDS-PAGE Stained with Coomassie Blue.
Restrictions:	For Research Use only

Handling

Buffer:	50 mM Tris-HCl, 10 mM reduced Glutathione, pH =8.0 in the elution buffer.
Handling Advice:	Aliquot to avoid repeated freezing and thawing.
Storage:	-80 °C
Storage Comment:	Best use within three months from the date of receipt of this protein.

Images

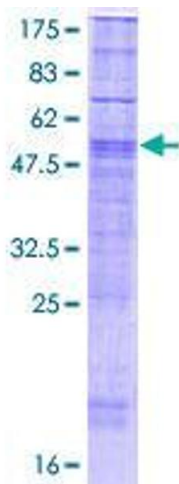


Image 1.