

Datasheet for ABIN1318010
RHOB Protein (AA 92-193) (GST tag)



[Go to Product page](#)

1 Image

Overview

Quantity:	10 µg
Target:	RHOB
Protein Characteristics:	AA 92-193
Origin:	Human
Source:	Wheat germ
Protein Type:	Recombinant
Purification tag / Conjugate:	This RHOB protein is labelled with GST tag.
Application:	ELISA, Western Blotting (WB), Affinity Purification (AP), Antibody Array (AA)

Product Details

Purpose:	RHOB (Human) Recombinant Protein (Q01)
Sequence:	LENIPEKWVP EVKHFCPNVP IILVANKKDL RSDEHVTEL ARMKQEPVRT DDGRAMAVRI QAYDYLECSA KTKEGVREVF ETATRAALQK RYGSQNGCIN CC
Characteristics:	Human RHOB partial ORF (NP_004031, 92 a.a. - 193 a.a.) recombinant protein with GST-tag at N-terminal.
Purification:	in vitro wheat germ expression system

Target Details

Target:	RHOB
Alternative Name:	RHOB (RHOB Products)

Target Details

Background:	Full Gene Name: ras homolog gene family, member B Synonyms: ARH6,ARHB,MST081,MSTP081,RHOH6
Gene ID:	388
NCBI Accession:	NM_004040

Application Details

Application Notes:	Optimal working dilution should be determined by the investigator.
Comment:	Preparation method: in vitro, wheat germ expression system Product Quality tested by: 12.5% SDS-PAGE Stained with Coomassie Blue.
Restrictions:	For Research Use only

Handling

Buffer:	50 mM Tris-HCl, 10 mM reduced Glutathione, pH =8.0 in the elution buffer.
Handling Advice:	Aliquot to avoid repeated freezing and thawing.
Storage:	-80 °C
Storage Comment:	Best use within three months from the date of receipt of this protein.

Images

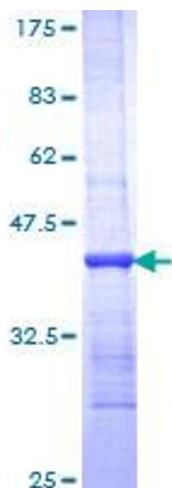


Image 1.