



[Go to Product page](#)

Datasheet for ABIN1318014

## RHOBTB1 Protein (AA 494-603) (GST tag)

### 1 Image

#### Overview

Quantity:	10 µg
Target:	RHOBTB1
Protein Characteristics:	AA 494-603
Origin:	Human
Source:	Wheat germ
Protein Type:	Recombinant
Purification tag / Conjugate:	This RHOBTB1 protein is labelled with GST tag.
Application:	ELISA, Western Blotting (WB), Affinity Purification (AP), Antibody Array (AA)

#### Product Details

Purpose:	RHOBTB1 (Human) Recombinant Protein (Q01)
Sequence:	GAISAHKPLL ICSC EWMAAM FGGSFVESAN SEVYLPNINK ISMQAVLDYL YTKQLSPNLD LDPLELIALA NRFCLPHLVA LAEQHAVQEL TKAATSGVGI DGEVLSYLEL
Characteristics:	Human RHOBTB1 partial ORF ( AAH32848, 494 a.a. - 603 a.a.) recombinant protein with GST-tag at N-terminal.
Purification:	in vitro wheat germ expression system

#### Target Details

Target:	RHOBTB1
Alternative Name:	RHOBTB1 ( <a href="#">RHOBTB1 Products</a> )

## Target Details

Background: Full Gene Name: Rho-related BTB domain containing 1  
Synonyms: KIAA0740,MGC33059,MGC33841

Gene ID: 9886

## Application Details

Application Notes: Optimal working dilution should be determined by the investigator.

Comment: Preparation method: in vitro, wheat germ expression system  
Product Quality tested by: 12.5% SDS-PAGE Stained with Coomassie Blue.

Restrictions: For Research Use only

## Handling

Buffer: 50 mM Tris-HCl, 10 mM reduced Glutathione, pH =8.0 in the elution buffer.

Handling Advice: Aliquot to avoid repeated freezing and thawing.

Storage: -80 °C

Storage Comment: Best use within three months from the date of receipt of this protein.

## Images

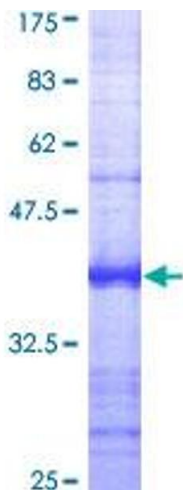


Image 1.