

Datasheet for ABIN1318016
RHOBTB2 Protein (AA 1-727) (GST tag)



[Go to Product page](#)

1 Image

Overview

Quantity:	10 µg
Target:	RHOBTB2
Protein Characteristics:	AA 1-727
Origin:	Human
Source:	Wheat germ
Protein Type:	Recombinant
Purification tag / Conjugate:	This RHOBTB2 protein is labelled with GST tag.
Application:	ELISA, Western Blotting (WB), Affinity Purification (AP), Antibody Array (AA)

Product Details

Purpose:	RHOBTB2 (Human) Recombinant Protein (P01)
Sequence:	MDSMDYERP NVETIKCVVW GDNVAVGKTRL ICARACNATL TQYQLLATHV PTVWVWIDQYR VCQEVLESLR DVVDDVSVSL RLWDTFGDHH KDRRFAYGRS DVVVLCSIA NPNSLHHVKT MWYPEIKHFC PRAPVILVGC QLDLRYADLE AVNRARRPLA RPIKPNEILP PEKGREVAKE LGIPYYETSV VAQFGIKDVF DNAIRAALIS RRHLQFWKSH LRNVQRPLLQ APFLPPKPPP PIIVVPDPPS SSEECPAHLL EDPLCADVIL VLQERVIFA HKIYLSTSSS KFYDLFLMDL SEGELGGPSE PGGTHPEDHQ GHSDQHSHHHH HHHHGRDFLL RAASFDVCES VDEAGGSGPA GLRASTDGI LRNGTGYLP GRGRVLSSWS RAFVSIQEEM AEDPLTYKSR LMVVVKMDSS IQPGPFRAVL KYLYTGELDE NERDLMHIAH IAELLEVDL RMMVANILNN EAFMNQEITK AFHVRRTNRV KECLAKGTFS DVTFILDDGT ISAHKPLLIS SCDWMAAMFG GPFVESSTRE VVPYTSKSC MRVLEYLYT GMFTSSPDL DMKLIILANR LCLPHLVALT EQYTVTGLME ATQMMVDIDG DVLVFELEAQ FHCAYQLADW CLHHICTNYN NVCRKFRDM KAMSPENQEY

Product Details

FEKHRWPPVW YLKEEDHYQR ARKEREKEDY LHLKRQPKRR WLFWNPSPPS SSSAASSSSP
SSSSAVV

Characteristics: Human RHOBTB2 full-length ORF (AAH34917.1, 1 a.a. - 727 a.a.) recombinant protein with GST-tag at N-terminal.

Purification: in vitro wheat germ expression system

Target Details

Target: RHOBTB2

Alternative Name: RHOBTB2 ([RHOBTB2 Products](#))

Background: Full Gene Name: Rho-related BTB domain containing 2
Synonyms: DBC2,KIAA0717

Gene ID: 23221

Application Details

Application Notes: Optimal working dilution should be determined by the investigator.

Comment: Preparation method: in vitro, wheat germ expression system
Product Quality tested by: 12.5% SDS-PAGE Stained with Coomassie Blue.

Restrictions: For Research Use only

Handling

Buffer: 50 mM Tris-HCl, 10 mM reduced Glutathione, pH =8.0 in the elution buffer.

Handling Advice: Aliquot to avoid repeated freezing and thawing.

Storage: -80 °C

Storage Comment: Best use within three months from the date of receipt of this protein.

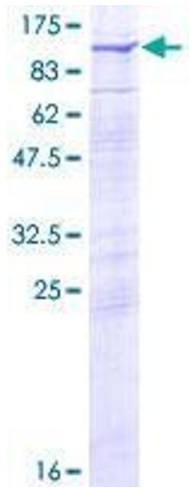


Image 1.