



[Go to Product page](#)

Datasheet for ABIN1318028
RHOD Protein (AA 1-210) (GST tag)

1 Image

Overview

Quantity:	10 µg
Target:	RHOD
Protein Characteristics:	AA 1-210
Origin:	Human
Source:	Wheat germ
Protein Type:	Recombinant
Purification tag / Conjugate:	This RHOD protein is labelled with GST tag.
Application:	Western Blotting (WB), ELISA, Affinity Purification (AP), Antibody Array (AA)

Product Details

Purpose:	RHOD (Human) Recombinant Protein (P01)
Sequence:	MTAAQAAGEE APPGVRSVKV VLVGDGGCGK TSLLMVFADG AFPESYTPTV FERYMVNLQV KGKPVHLHIW DTAGQDDYDR LRPLFYPDAS VLLLCFDVTS PNSFDNIFNR WYPEVNHFCCK KVPIIVVGCK TDLRKDKSLV NKLRRNGLEP VTYHRGQEMA RSVGAVAYLE CSARLHDNVH AVFQEAEEVA LSSRGRNFWR RITQGFCVVT
Characteristics:	Human RHOD full-length ORF (AAH01338, 1 a.a. - 210 a.a.) recombinant protein with GST-tag at N-terminal.
Purification:	in vitro wheat germ expression system

Target Details

Target:	RHOD
---------	------

Target Details

Alternative Name:	RHOD (RHOD Products)
Background:	Full Gene Name: ras homolog gene family, member D Synonyms: ARHD,RHOHP1,RHOM,Rho
Gene ID:	29984

Application Details

Application Notes:	Optimal working dilution should be determined by the investigator.
Comment:	Preparation method: in vitro, wheat germ expression system Product Quality tested by: 12.5% SDS-PAGE Stained with Coomassie Blue.
Restrictions:	For Research Use only

Handling

Buffer:	50 mM Tris-HCl, 10 mM reduced Glutathione, pH =8.0 in the elution buffer.
Handling Advice:	Aliquot to avoid repeated freezing and thawing.
Storage:	-80 °C
Storage Comment:	Best use within three months from the date of receipt of this protein.

Images

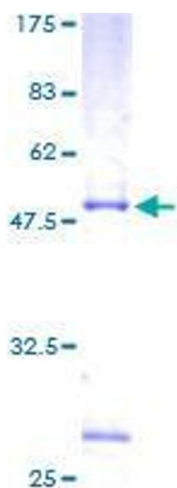


Image 1.