

Datasheet for ABIN1318052  
**RHOXF2 Protein (AA 1-288) (GST tag)**



[Go to Product page](#)

1 Image

Overview

Quantity:	25 µg
Target:	RHOXF2
Protein Characteristics:	AA 1-288
Origin:	Human
Source:	Wheat germ
Protein Type:	Recombinant
Purification tag / Conjugate:	This RHOXF2 protein is labelled with GST tag.
Application:	ELISA, Western Blotting (WB), Affinity Purification (AP), Antibody Array (AA)

Product Details

Purpose:	PEPP-2 (Human) Recombinant Protein (P01)
Sequence:	MEPPDQCSQY MTSLLSPAVD DEKELQDMNA MVLSLTEEVK EEEEDAQPEP EQGTAAGEKL KSAGAQQGEE KDGGEKDG GGAGVPGHLW EGDLEGTSGS DGNVEDSDQS EKEPGQYSR PRGAVGGLEP GNAQQPNVHA FTPLQLQELE RIFQREQFPS EFLRRRLARS MNVTELAVQI WFENRRAKWR RHQRALMARN MLPFMAVGQP VMVTAAEAIT APLFISGMRD DYFWDHSHSS SLCFPMPPFP PPSLPLPLML LPPMPPAGQA EFGPFVIV PSFTFPNV
Characteristics:	Human PEPP-2 full-length ORF ( AAH21719.1, 1 a.a. - 288 a.a.) recombinant protein with GST-tag at N-terminal.
Purification:	in vitro wheat germ expression system

## Target Details

Target:	RHOXF2
Alternative Name:	RHOXF2 ( <a href="#">RHOXF2 Products</a> )
Background:	Full Gene Name: Rhox homeobox family, member 2 Synonyms: PEPP-2,PEPP2,THG1
Gene ID:	84528

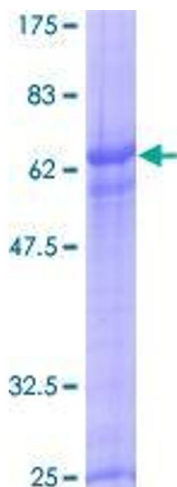
## Application Details

Application Notes:	Optimal working dilution should be determined by the investigator.
Comment:	Preparation method: in vitro, wheat germ expression system Product Quality tested by: 12.5% SDS-PAGE Stained with Coomassie Blue.
Restrictions:	For Research Use only

## Handling

Buffer:	50 mM Tris-HCl, 10 mM reduced Glutathione, pH =8.0 in the elution buffer.
Handling Advice:	Aliquot to avoid repeated freezing and thawing.
Storage:	-80 °C
Storage Comment:	Best use within three months from the date of receipt of this protein.

## Images



**Image 1.**