



[Go to Product page](#)

Datasheet for ABIN1318055

## RHPN1 Protein (AA 1-670) (GST tag)

### 1 Image

#### Overview

Quantity:	10 µg
Target:	RHPN1
Protein Characteristics:	AA 1-670
Origin:	Human
Source:	Wheat germ
Protein Type:	Recombinant
Purification tag / Conjugate:	This RHPN1 protein is labelled with GST tag.
Application:	ELISA, Western Blotting (WB), Affinity Purification (AP), Antibody Array (AA)

#### Product Details

Purpose:	RHPN1 (Human) Recombinant Protein (P01)
Sequence:	<p>MILEERPDGA GAGEESPR LQ GCDSL TQIQ C GQLQSRRAQI HQQIDKELQM RTGAENLYRA          TSNNRVRETV ALELSYVNSN LQLLKEELE LSGGVDPGRH GSEAVTVPMI PLGLKETKEL          DWSTPLKELI SVHFGEDGAS YEAEIRELEA LRQAMRTPSR NESGLELLTA YYNQLCFLDA          RFLTPARSLG LFFHWYDSL T GVPAQQRALA FEKGSVLFNI GALHTQIGAR QDRSCTEGAR          RAMEAFQRAA GAFSLLRENF SHAPSPDMA ASLCALEQLM MAQAQECVFE GLSPPASMAP          QDCLAQLRLA QEAAQVAAEY RLVHRTMAQP PVHDYVPVSW TALVHVKA EY FRSLAHYHVA          MALCDGSPAT EGELPTHEQV FLQPPTSSKP RGPVLPQELE ERRQLGKAHL KRAILGQEEA          LRLHALCRVL REVDLLRAVI SQT LQRSLAK YAELDREDDF CEAAEAPDIQ PKTHQKPEAR          MPRLSQGKGP DIFHRLGPLS VFS AKNRWRL VGPVHLTRGE GGFGLTLRGD SPVLIAAVIP          GSQAAAAGLK EGDYIVSVNG QPCRWWRHAE VVTELKAAGE AGASLQVVSL LPSSRLPSLG          DRRPVLLGPR GLLRSQREHG CKTPASTWAS PRPLLNWSRK AQQGKTGGCP QPCAPVKPAP</p>

## Product Details

---

PSSLKHPGWP

Characteristics:	Human RHPN1 full-length ORF ( NP_443156.2, 1 a.a. - 670 a.a.) recombinant protein with GST-tag at N-terminal.
Purification:	in vitro wheat germ expression system

## Target Details

---

Target:	RHPN1
Alternative Name:	RHPN1 ( <a href="#">RHPN1 Products</a> )
Background:	Full Gene Name: rhophilin, Rho GTPase binding protein 1 Synonyms: KIAA1929,ODF5,RHOPHILIN,RHPN
Gene ID:	114822
NCBI Accession:	<a href="#">NM_052924</a>

## Application Details

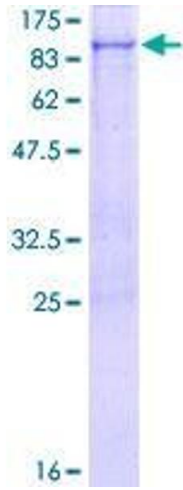
---

Application Notes:	Optimal working dilution should be determined by the investigator.
Comment:	Preparation method: in vitro, wheat germ expression system Product Quality tested by: 12.5% SDS-PAGE Stained with Coomassie Blue.
Restrictions:	For Research Use only

## Handling

---

Buffer:	50 mM Tris-HCl, 10 mM reduced Glutathione, pH =8.0 in the elution buffer.
Handling Advice:	Aliquot to avoid repeated freezing and thawing.
Storage:	-80 °C
Storage Comment:	Best use within three months from the date of receipt of this protein.



**Image 1.**