

Datasheet for ABIN1318059

RHPN2 Protein (AA 1-686) (GST tag)



[Go to Product page](#)

1 Image

Overview

Quantity:	10 µg
Target:	RHPN2
Protein Characteristics:	AA 1-686
Origin:	Human
Source:	Wheat germ
Protein Type:	Recombinant
Purification tag / Conjugate:	This RHPN2 protein is labelled with GST tag.
Application:	ELISA, Western Blotting (WB), Affinity Purification (AP), Antibody Array (AA)

Product Details

Purpose:	RHPN2 (Human) Recombinant Protein (P02)
Sequence:	MTDALLPAAP QPLEKKNMGY FRKGCNPLAQ TGRSKLQNR AALNQQILKA VRMRTGAENL LKVATNSKVR EQVRELSFV NSDLQMLKEE LEGLNISVGV YQNTEEAFTI PLIPLGLKET KDVFDAVVLK DFILEHYSYD GYLYEDEIAD LMDLRQACRT PSRDEAGVEL LMTYFIQLGF VESRFFPPTR QMGLLFTWYD SLTGVPVSQQ NLLLEKASVL FNTGALYTQI GTRCDRQTQA GLESIDAFAQ RAAGVLNLYK DTFHTPSYD MSPAMLSVLV KMMLAQEQES VFEKISLPGI RNEFFMLVKV AQEAAKVGVEV YQQLHAAMSQ APVKENIPYS WASLACVKAH HYAALAHYFT AILLIDHQVK PGTDLDHQEK CLSQLYDHMP EGLTPLATLK NDQORRQLGK SHLRRAMAHH EESVREASLC KKLRSIEVLQ KVLCAAQERS RLTYAQHQEE DLLNLIDAP SVVAKTEQEV DIILPQFSKL TVTDFQKLG PLSVFSANKR WTPPRSIRFT AEEGDLGFTL RGNAPVQVHF LDPYCSASVA GAREGDYIVS IQLVDCKWLT LSEVMKLLKS FGEDEIEMKV VSLLDSTSSM HNKSATYSVG MQKTYSMICL AIDDDDKTDK TKKISKKLSF LSWGTKNRQ KSASTLCLPS

Product Details

VGAARPQVKK KLPSPFLLN SDSSWY

Characteristics:	Human RHPN2 full-length ORF (NP_149094.2, 1 a.a. - 686 a.a.) recombinant protein with GST-tag at N-terminal.
Purification:	in vitro wheat germ expression system

Target Details

Target:	RHPN2
Alternative Name:	RHPN2 (RHPN2 Products)
Background:	Full Gene Name: rhopilin, Rho GTPase binding protein 2 Synonyms: RhoBP,p76RBE
Gene ID:	85415
NCBI Accession:	NM_033103

Application Details

Application Notes:	Optimal working dilution should be determined by the investigator.
Comment:	Preparation method: in vitro, wheat germ expression system Product Quality tested by: 12.5% SDS-PAGE Stained with Coomassie Blue.
Restrictions:	For Research Use only

Handling

Buffer:	50 mM Tris-HCl, 10 mM reduced Glutathione, pH =8.0 in the elution buffer.
Handling Advice:	Aliquot to avoid repeated freezing and thawing.
Storage:	-80 °C
Storage Comment:	Best use within three months from the date of receipt of this protein.

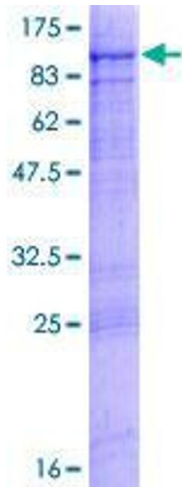


Image 1.