



[Go to Product page](#)

Datasheet for ABIN1318061

RIBC1 Protein (AA 1-379) (GST tag)

1 Image

Overview

Quantity:	25 µg
Target:	RIBC1
Protein Characteristics:	AA 1-379
Origin:	Human
Source:	Wheat germ
Protein Type:	Recombinant
Purification tag / Conjugate:	This RIBC1 protein is labelled with GST tag.
Application:	ELISA, Western Blotting (WB), Affinity Purification (AP), Antibody Array (AA)

Product Details

Purpose:	RIBC1 (Human) Recombinant Protein (P01)
Sequence:	MYNIKQSTDT KEAAAIEARR NREKERQNR FNVNRNVMGV DVQALNNQVG DRKRREAER SKEAAYGTSQ VQYDVVVQML EKEEADRTRQ LAKKVQEFRE QKQQLKNGRE FSLWDPGQVW KGLPTYLSYS NTYPGPASLQ YFSGEDLDRD TRLRMQQGQF RYNLERQQQE QQAKVDENY TDALSNQLRL AMDAQATHLA RLEESCRAAM MCAMANANKA QAAVQAGRQR CERQREQKAN LAEIQHQSTS DLLTENPQVA QHPMAPYRVL PYCWKGMTPE QQAIRKEQE VQRSKKQAHR QAEKTLDETEW KSQTMSSAQA VLELEEQERE LCAVFQRGLG SFNQQLANEQ KAQQDYLNVS IYTNQPTAQY HQQFNTSSR
Characteristics:	Human RIBC1 full-length ORF (NP_001026915.1, 1 a.a. - 379 a.a.) recombinant protein with GST-tag at N-terminal.
Purification:	in vitro wheat germ expression system

Target Details

Target:	RIBC1
Alternative Name:	RIBC1 (RIBC1 Products)
Background:	Full Gene Name: RIB43A domain with coiled-coils 1 Synonyms: 2610028I09Rik,FLJ32783,MGC46233
Gene ID:	158787
NCBI Accession:	NM_001031745

Application Details

Application Notes:	Optimal working dilution should be determined by the investigator.
Comment:	Preparation method: in vitro, wheat germ expression system Product Quality tested by: 12.5% SDS-PAGE Stained with Coomassie Blue.
Restrictions:	For Research Use only

Handling

Buffer:	50 mM Tris-HCl, 10 mM reduced Glutathione, pH =8.0 in the elution buffer.
Handling Advice:	Aliquot to avoid repeated freezing and thawing.
Storage:	-80 °C
Storage Comment:	Best use within three months from the date of receipt of this protein.

Images

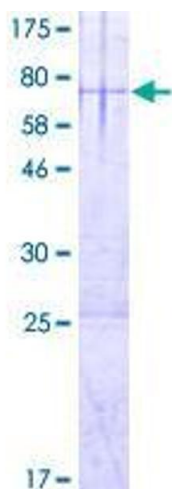


Image 1.