

Datasheet for ABIN1318122

RIT1 Protein (AA 120-217) (GST tag)[Go to Product page](#)**1** Image

Overview

Quantity:	10 µg
Target:	RIT1
Protein Characteristics:	AA 120-217
Origin:	Human
Source:	Wheat germ
Protein Type:	Recombinant
Purification tag / Conjugate:	This RIT1 protein is labelled with GST tag.
Application:	ELISA, Western Blotting (WB), Affinity Purification (AP), Antibody Array (AA)

Product Details

Purpose:	RIT1 (Human) Recombinant Protein (Q01)
Sequence:	RVRRTDDTPV VLVGNKSDLK QLRQVTKEEG LALAREFSCP FFETSAAYRY YIDDFVHALV REIRRKEKEA VLAMEKKSKP KNSVWKRLKS PFRKKKDS
Characteristics:	Human RIT1 partial ORF (NP_008843, 120 a.a. - 217 a.a.) recombinant protein with GST-tag at N-terminal.
Purification:	in vitro wheat germ expression system

Target Details

Target:	RIT1
Alternative Name:	RIT1 (RIT1 Products)

Target Details

Background:	Full Gene Name: Ras-like without CAAX 1 Synonyms: MGC125864,MGC125865,RIBB,RIT,ROC1
Gene ID:	6016
NCBI Accession:	NM_006912
Pathways:	Neurotrophin Signaling Pathway

Application Details

Application Notes:	Optimal working dilution should be determined by the investigator.
Comment:	Preparation method: in vitro, wheat germ expression system Product Quality tested by: 12.5% SDS-PAGE Stained with Coomassie Blue.
Restrictions:	For Research Use only

Handling

Buffer:	50 mM Tris-HCl, 10 mM reduced Glutathione, pH =8.0 in the elution buffer.
Handling Advice:	Aliquot to avoid repeated freezing and thawing.
Storage:	-80 °C
Storage Comment:	Best use within three months from the date of receipt of this protein.

Images

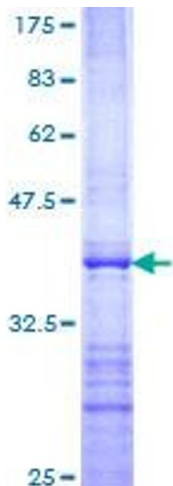


Image 1.