

Datasheet for ABIN1318128

**Clavesin 1 Protein (CLVS1) (AA 1-354) (GST tag)**[Go to Product page](#)**1** Image

## Overview

Quantity:	25 µg
Target:	Clavesin 1 (CLVS1)
Protein Characteristics:	AA 1-354
Origin:	Human
Source:	Wheat germ
Protein Type:	Recombinant
Purification tag / Conjugate:	This Clavesin 1 protein is labelled with GST tag.
Application:	ELISA, Western Blotting (WB), Affinity Purification (AP), Antibody Array (AA)

## Product Details

Purpose:	RLBP1L1 (Human) Recombinant Protein (P01)
Sequence:	MGPVSLLPKY QKLNTWNGDL AKMTHLQAGL SPETIEKARL ELNENPDVLH QDIQQVRDMI ITRPDIGFLR TDDAFILRFL RARKFHQADA FRLLAQYFQY RQLNLDMFKN FKADDPGIKR ALIDGFPVGL ENRDHYGRKI LLLFAANWDQ SRNSFTDILR AILLSLEVL IEDPELQINGF ILIIDWSNFS FKQASKLTIPS ILKLAIEGLQ DSFPARFGGV HFVNQPWYIH ALYTLIKPFL KDKTRKRIFL HGNNLNSLHQ LIHPEFLPSE FGGTLPPYDM GTWARTLLGP DYSDENDYTH TSYNAMHVKH TSSNLERECS PKLMKRSQSV VEAGTLKHEE KGENENTQPL LALD
Characteristics:	Human RLBP1L1 full-length ORF ( NP_775790.1, 1 a.a. - 354 a.a.) recombinant protein with GST-tag at N-terminal.
Purification:	in vitro wheat germ expression system

## Target Details

Target:	Clavesin 1 (CLVS1)
Alternative Name:	RLBP1L1 ( <a href="#">CLVS1 Products</a> )
Background:	Full Gene Name: retinaldehyde binding protein 1-like 1 Synonyms: CRALBPL,FLJ37248,MGC34646
Gene ID:	157807
NCBI Accession:	<a href="#">NM_173519</a>

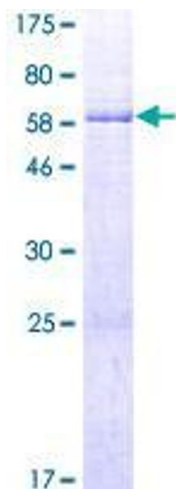
## Application Details

Application Notes:	Optimal working dilution should be determined by the investigator.
Comment:	Preparation method: in vitro, wheat germ expression system Product Quality tested by: 12.5% SDS-PAGE Stained with Coomassie Blue.
Restrictions:	For Research Use only

## Handling

Buffer:	50 mM Tris-HCl, 10 mM reduced Glutathione, pH =8.0 in the elution buffer.
Handling Advice:	Aliquot to avoid repeated freezing and thawing.
Storage:	-80 °C
Storage Comment:	Best use within three months from the date of receipt of this protein.

## Images



**Image 1.**