



[Go to Product page](#)

Datasheet for ABIN1318129

## RLF Protein (AA 1805-1913) (GST tag)

### 1 Image

#### Overview

Quantity:	10 µg
Target:	RLF
Protein Characteristics:	AA 1805-1913
Origin:	Human
Source:	Wheat germ
Protein Type:	Recombinant
Purification tag / Conjugate:	This RLF protein is labelled with GST tag.
Application:	Affinity Purification (AP), Antibody Array (AA), ELISA, Western Blotting (WB)

#### Product Details

Purpose:	RLF (Human) Recombinant Protein (Q01)
Sequence:	SNDLTGNVVA NNMVNDSEPE VDIPHSSSDS TIHENLTAIP PLIVAETTTV PSLENLRWV DKALTDGEL ALKQLHYLRP VVLLERSKFS TPILDLFPTK KTDELCVGS
Characteristics:	Human RLF partial ORF ( NP_036553.1, 1805 a.a. - 1913 a.a.) recombinant protein with GST-tag at N-terminal.
Purification:	in vitro wheat germ expression system

#### Target Details

Target:	RLF
Alternative Name:	RLF ( <a href="#">RLF Products</a> )

## Target Details

Background:	Full Gene Name: rearranged L-myc fusion Synonyms: MGC142226,ZN-15L,ZNF292L
Gene ID:	6018
NCBI Accession:	<a href="#">NM_012421</a>

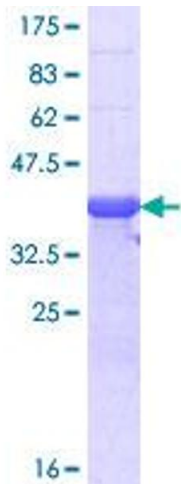
## Application Details

Application Notes:	Optimal working dilution should be determined by the investigator.
Comment:	Preparation method: in vitro, wheat germ expression system Product Quality tested by: 12.5% SDS-PAGE Stained with Coomassie Blue.
Restrictions:	For Research Use only

## Handling

Buffer:	50 mM Tris-HCl, 10 mM reduced Glutathione, pH =8.0 in the elution buffer.
Handling Advice:	Aliquot to avoid repeated freezing and thawing.
Storage:	-80 °C
Storage Comment:	Best use within three months from the date of receipt of this protein.

## Images



**Image 1.**