

Datasheet for ABIN1318144

**RNASE10 Protein (AA 1-216) (GST tag)**[Go to Product page](#)**1** Image

## Overview

Quantity:	10 µg
Target:	RNASE10
Protein Characteristics:	AA 1-216
Origin:	Human
Source:	Wheat germ
Protein Type:	Recombinant
Purification tag / Conjugate:	This RNASE10 protein is labelled with GST tag.
Application:	ELISA, Western Blotting (WB), Affinity Purification (AP), Antibody Array (AA)

## Product Details

Purpose:	RNASE10 (Human) Recombinant Protein (P01)
Sequence:	MKLNLVQIFF MLLMLLLGLG MGLGLGLHMA TAVLEESDQP LNEFWSSDSQ DKAEATEEGD GTQTTETLVL SNKEVVQPGW PEDPILGEDE VGGNKMLRAS ALFQSNKDYL RLDQTDRECN DMMAHKMKKEP SQSCIAQYAF IHEDLNTVKA VCNSPVIACE LKGGKCHKSS RPFDLTLCEL SQPDQVTPNC NYLTSVIKKH IIITCNDMKR QLPTGQ
Characteristics:	Human RNASE10 full-length ORF ( NP_001012993.1, 1 a.a. - 216 a.a.) recombinant protein with GST-tag at N-terminal.
Purification:	in vitro wheat germ expression system

## Target Details

Target:	RNASE10
---------	---------

## Target Details

Alternative Name:	RNASE10 ( <a href="#">RNASE10 Products</a> )
Background:	Full Gene Name: ribonuclease, RNase A family, 10 (non-active) Synonyms: RNASE9
Gene ID:	338879
NCBI Accession:	<a href="#">NM_001012975</a>

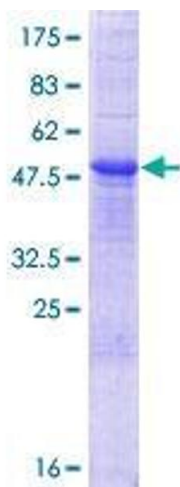
## Application Details

Application Notes:	Optimal working dilution should be determined by the investigator.
Comment:	Preparation method: in vitro, wheat germ expression system Product Quality tested by: 12.5% SDS-PAGE Stained with Coomassie Blue.
Restrictions:	For Research Use only

## Handling

Buffer:	50 mM Tris-HCl, 10 mM reduced Glutathione, pH =8.0 in the elution buffer.
Handling Advice:	Aliquot to avoid repeated freezing and thawing.
Storage:	-80 °C
Storage Comment:	Best use within three months from the date of receipt of this protein.

## Images



**Image 1.**