



[Go to Product page](#)

Datasheet for ABIN1318146

RNASE11 Protein (AA 1-199) (GST tag)

1 Image

Overview

Quantity:	10 µg
Target:	RNASE11
Protein Characteristics:	AA 1-199
Origin:	Human
Source:	Wheat germ
Protein Type:	Recombinant
Purification tag / Conjugate:	This RNASE11 protein is labelled with GST tag.
Application:	Western Blotting (WB), ELISA, Affinity Purification (AP), Antibody Array (AA)

Product Details

Purpose:	RNASE11 (Human) Recombinant Protein (P01)
Sequence:	METFPLLLLS LGLVLAEEASE STMKIIKEEF TDEEMQYDMA KSGQEKQTIE ILMNPILLVK NTSLSMSKDD MSSTLLTFRS LHYNDPKGNS SGNDKECCND MTVWRKVSEA NGSCKWSNNF IRSSTEVMRR VHRAPSCKFV QNPGISCCES LELENTVCQF TTGKQFPRCQ YHSVTSLEKI LTVLTGHSLM SWLVCGSKL
Characteristics:	Human RNASE11 full-length ORF (NP_660293.1, 1 a.a. - 199 a.a.) recombinant protein with GST-tag at N-terminal.
Purification:	in vitro wheat germ expression system

Target Details

Target:	RNASE11
---------	---------

Target Details

Alternative Name:	RNASE11 (RNASE11 Products)
Background:	Full Gene Name: ribonuclease, RNase A family, 11 (non-active) Synonyms: C14orf6
Gene ID:	122651
NCBI Accession:	NM_145250

Application Details

Application Notes:	Optimal working dilution should be determined by the investigator.
Comment:	Preparation method: in vitro, wheat germ expression system Product Quality tested by: 12.5% SDS-PAGE Stained with Coomassie Blue.
Restrictions:	For Research Use only

Handling

Buffer:	50 mM Tris-HCl, 10 mM reduced Glutathione, pH =8.0 in the elution buffer.
Handling Advice:	Aliquot to avoid repeated freezing and thawing.
Storage:	-80 °C
Storage Comment:	Best use within three months from the date of receipt of this protein.

Images

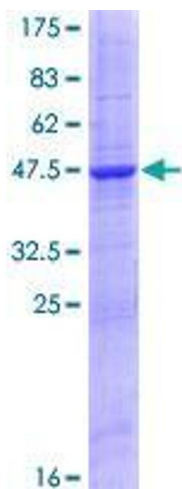


Image 1.