



[Go to Product page](#)

Datasheet for ABIN1318155

## RNASE7 Protein (AA 1-156) (GST tag)

### 1 Image

#### Overview

Quantity:	25 µg
Target:	RNASE7
Protein Characteristics:	AA 1-156
Origin:	Human
Source:	Wheat germ
Protein Type:	Recombinant
Purification tag / Conjugate:	This RNASE7 protein is labelled with GST tag.
Application:	Western Blotting (WB), ELISA, Affinity Purification (AP), Antibody Array (AA)

#### Product Details

Purpose:	RNASE7 (Human) Recombinant Protein (P01)
Sequence:	MAPARAGFCP LLLLLLLGLW VAEIPVSAKP KGMTSSQWFK IQHMQPSPQA CNSAMKNINK HTKRCKDLNT FLHEPFSSVA ATCQTPKIAC KNGDKNCHQS HGPVSLTMCK LTSGKYPNCR YKEKRQNKSY VVACKPPQKK DSQQFHLVPV HLDRVL
Characteristics:	Human RNASE7 full-length ORF ( NP_115961.1, 1 a.a. - 156 a.a.) recombinant protein with GST-tag at N-terminal.
Purification:	in vitro wheat germ expression system

#### Target Details

Target:	RNASE7
Alternative Name:	RNASE7 ( <a href="#">RNASE7 Products</a> )

## Target Details

Background:	Full Gene Name: ribonuclease, RNase A family, 7 Synonyms: MGC133220
Gene ID:	84659
NCBI Accession:	<a href="#">NM_032572</a>

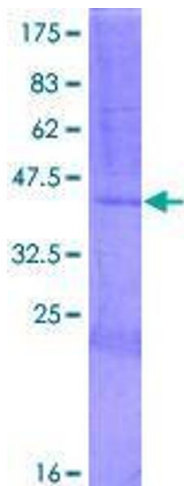
## Application Details

Application Notes:	Optimal working dilution should be determined by the investigator.
Comment:	Preparation method: in vitro, wheat germ expression system Product Quality tested by: 12.5% SDS-PAGE Stained with Coomassie Blue.
Restrictions:	For Research Use only

## Handling

Buffer:	50 mM Tris-HCl, 10 mM reduced Glutathione, pH =8.0 in the elution buffer.
Handling Advice:	Aliquot to avoid repeated freezing and thawing.
Storage:	-80 °C
Storage Comment:	Best use within three months from the date of receipt of this protein.

## Images



**Image 1.**