



[Go to Product page](#)

Datasheet for ABIN1318266

RNF148 Protein (AA 1-305) (GST tag)

1 Image

Overview

Quantity:	10 µg
Target:	RNF148
Protein Characteristics:	AA 1-305
Origin:	Human
Source:	Wheat germ
Protein Type:	Recombinant
Purification tag / Conjugate:	This RNF148 protein is labelled with GST tag.
Application:	ELISA, Western Blotting (WB), Affinity Purification (AP), Antibody Array (AA)

Product Details

Purpose:	RNF148 (Human) Recombinant Protein (P01)
Sequence:	MSFLRITPST HSSVSSGLLR LSIFLLLSFP DSNGKAIWTA HLNITFQVGN EITSELGESG VFGNHSPLER VSGVVALPEG WNQNACHPLT NFSRPKQADS WLALIERGGC TFTHKINVAA EKGANGVIY NYQGTGSKVF PMSHQGTENI VAVMISNLKG MEILHSIQKG VYVTVIIIEVG RMHMQWVSHY IMYLFTFLAA TIAYFYLDLV WRLTPRPVNS FTRRRSQIKT DVKKAIDQLQ LRVLKEGDDEE LDLNEDNCVV CFDTYKPQDV VRILTCKHFF HKACIDPWLL AHRTCPMCKC DILKT
Characteristics:	Human RNF148 full-length ORF (NP_932351.1, 1 a.a. - 305 a.a.) recombinant protein with GST-tag at N-terminal.
Purification:	in vitro wheat germ expression system

Target Details

Target:	RNF148
Alternative Name:	RNF148 (RNF148 Products)
Background:	Full Gene Name: ring finger protein 148 Synonyms: MGC35222
Gene ID:	378925
NCBI Accession:	NM_198085

Application Details

Application Notes:	Optimal working dilution should be determined by the investigator.
Comment:	Preparation method: in vitro, wheat germ expression system Product Quality tested by: 12.5% SDS-PAGE Stained with Coomassie Blue.
Restrictions:	For Research Use only

Handling

Buffer:	50 mM Tris-HCl, 10 mM reduced Glutathione, pH =8.0 in the elution buffer.
Handling Advice:	Aliquot to avoid repeated freezing and thawing.
Storage:	-80 °C
Storage Comment:	Best use within three months from the date of receipt of this protein.

Images

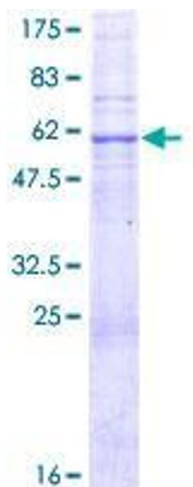


Image 1.