

Datasheet for ABIN1318268  
**RNF148 Protein (AA 139-238) (GST tag)**



[Go to Product page](#)

1 Image

Overview

Quantity:	10 µg
Target:	RNF148
Protein Characteristics:	AA 139-238
Origin:	Human
Source:	Wheat germ
Protein Type:	Recombinant
Purification tag / Conjugate:	This RNF148 protein is labelled with GST tag.
Application:	ELISA, Western Blotting (WB), Affinity Purification (AP), Antibody Array (AA)

Product Details

Purpose:	RNF148 (Human) Recombinant Protein (Q01)
Sequence:	VFPMSHQGTE NIVAVMISNL KGMEILHSIQ KGVYVTVIIE VGRMHMQWVS HYIMYLF TFL AATIAFYLD CVWRLTPRVP NSFTRRRSQI KTDVKK AIDQ
Characteristics:	Human RNF148 partial ORF ( NP_932351.1, 139 a.a. - 238 a.a.) recombinant protein with GST-tag at N-terminal.
Purification:	in vitro wheat germ expression system

Target Details

Target:	RNF148
Alternative Name:	RNF148 ( <a href="#">RNF148 Products</a> )

## Target Details

Background: Full Gene Name: ring finger protein 148  
Synonyms: MGC35222

Gene ID: 378925

NCBI Accession: [NM\\_198085](#)

## Application Details

Application Notes: Optimal working dilution should be determined by the investigator.

Comment: Preparation method: in vitro, wheat germ expression system  
Product Quality tested by: 12.5% SDS-PAGE Stained with Coomassie Blue.

Restrictions: For Research Use only

## Handling

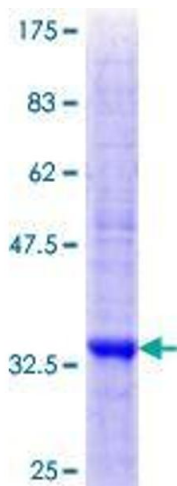
Buffer: 50 mM Tris-HCl, 10 mM reduced Glutathione, pH =8.0 in the elution buffer.

Handling Advice: Aliquot to avoid repeated freezing and thawing.

Storage: -80 °C

Storage Comment: Best use within three months from the date of receipt of this protein.

## Images



**Image 1.**