

Datasheet for ABIN1318270
RNF150 Protein (AA 1-314) (GST tag)



[Go to Product page](#)

1 Image

Overview

Quantity:	10 µg
Target:	RNF150
Protein Characteristics:	AA 1-314
Origin:	Human
Source:	Wheat germ
Protein Type:	Recombinant
Purification tag / Conjugate:	This RNF150 protein is labelled with GST tag.
Application:	ELISA, Western Blotting (WB), Affinity Purification (AP), Antibody Array (AA)

Product Details

Purpose:	RNF150 (Human) Recombinant Protein (P01)
Sequence:	MASSAHDRLA CDPNTKFAAP TRGKNWIALI PKGNCTYRDK IRNAFLQNAS AVVIFNVGSN TNETITMPHA GVEDIVAIMI PEPKGKEIVS LLERNITVTM YITIGTRNLQ KYVSRTSVVF VSISFIVLMI ISLAWLVFYY IQRFRYANAR DRNQRRLGDA AKKAISKLQI RTIKKGDKET ESDFDNCAVC IEGYKPNVWV RILPCRHLFH KSCVDPWLLD HRTCPMCKMN ILKALGIPPV ADCMDDLPTD FEGSLGGPPT NQITGASDTT VNESSVTLDP AVRTVGALQV VQDTPIPQE GDVIFTTNSF FCHT
Characteristics:	Human RNF150 full-length ORF (AAI01993.1, 1 a.a. - 314 a.a.) recombinant protein with GST-tag at N-terminal.
Purification:	in vitro wheat germ expression system

Target Details

Target:	RNF150
Alternative Name:	RNF150 (RNF150 Products)
Background:	Full Gene Name: ring finger protein 150 Synonyms: MGC125502
Gene ID:	57484

Application Details

Application Notes:	Optimal working dilution should be determined by the investigator.
Comment:	Preparation method: in vitro, wheat germ expression system Product Quality tested by: 12.5% SDS-PAGE Stained with Coomassie Blue.
Restrictions:	For Research Use only

Handling

Buffer:	50 mM Tris-HCl, 10 mM reduced Glutathione, pH =8.0 in the elution buffer.
Handling Advice:	Aliquot to avoid repeated freezing and thawing.
Storage:	-80 °C
Storage Comment:	Best use within three months from the date of receipt of this protein.

Images

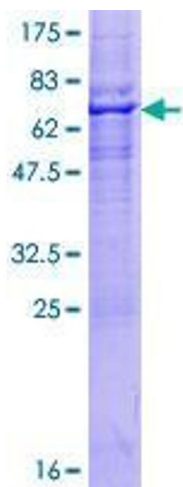


Image 1.