



[Go to Product page](#)

Datasheet for ABIN1318274

## RNF151 Protein (AA 1-245) (GST tag)

### 1 Image

#### Overview

Quantity:	25 µg
Target:	RNF151
Protein Characteristics:	AA 1-245
Origin:	Human
Source:	Wheat germ
Protein Type:	Recombinant
Purification tag / Conjugate:	This RNF151 protein is labelled with GST tag.
Application:	ELISA, Western Blotting (WB), Affinity Purification (AP), Antibody Array (AA)

#### Product Details

Purpose:	RNF151 (Human) Recombinant Protein (P01)
Sequence:	MGGGYDLNLF ASPPDSNFVC SVCHGV LKRP ARLPCSHIFC KKCILRWLAR QKTCPCRKE VKRKKVVHMN KLRKTIGRLE VKCKNADAGC IVTCPLAHRK GHQDSCPFE L TACPNEGCTS QVPRGTLAEH RQHCQQGSQQ RCPLGCGATL DPAERARHNC YRELHNAWSV RQERRRPLLL SLLRRVRWLD QATSWRREL AELSNFLEED TALLEGAPQE EAEAAPEGNV GAEVVGEPRA NIPCK
Characteristics:	Human RNF151 full-length ORF ( NP_777563.2, 1 a.a. - 245 a.a.) recombinant protein with GST-tag at N-terminal.
Purification:	in vitro wheat germ expression system

#### Target Details

Target:	RNF151
---------	--------

## Target Details

---

Alternative Name:	RNF151 ( <a href="#">RNF151 Products</a> )
Background:	Full Gene Name: ring finger protein 151 Synonyms: MGC129921
Gene ID:	146310
NCBI Accession:	<a href="#">NM_174903</a>

## Application Details

---

Application Notes:	Optimal working dilution should be determined by the investigator.
Comment:	Preparation method: in vitro, wheat germ expression system Product Quality tested by: 12.5% SDS-PAGE Stained with Coomassie Blue.
Restrictions:	For Research Use only

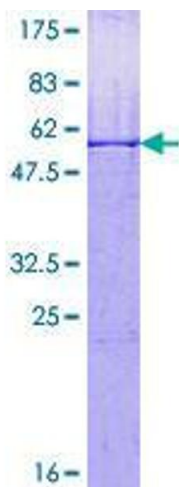
## Handling

---

Buffer:	50 mM Tris-HCl, 10 mM reduced Glutathione, pH =8.0 in the elution buffer.
Handling Advice:	Aliquot to avoid repeated freezing and thawing.
Storage:	-80 °C
Storage Comment:	Best use within three months from the date of receipt of this protein.

## Images

---



**Image 1.**