



[Go to Product page](#)

Datasheet for ABIN1318283  
**RNF166 Protein (AA 1-237) (GST tag)**

1 Image

Overview

Quantity:	10 µg
Target:	RNF166
Protein Characteristics:	AA 1-237
Origin:	Human
Source:	Wheat germ
Protein Type:	Recombinant
Purification tag / Conjugate:	This RNF166 protein is labelled with GST tag.
Application:	ELISA, Western Blotting (WB), Affinity Purification (AP), Antibody Array (AA)

Product Details

Purpose:	RNF166 (Human) Recombinant Protein (P01)
Sequence:	MAMFRSLVAS AQRQPPAGP AGGDSGLEAQ YTCPICLEVY HRPVAIGSCG HTFCGECLQP CLQVPSPLCP LCRLPFDPKK VDKATHVEKQ LSSYKAPCRG CNKKVTLAKM RVHISSCLKV QEQMANCPKF VPVVPTSQPI PSNIPNRSTF ACPYCGARNL DQQLVKHCV ESHRSDPNRV VCPICSAMPW GDPSYKSANF LQHLLHRHKF SYDTFVDYSI DEEAFFQAAL ALSLSEN
Characteristics:	Human RNF166 full-length ORF ( NP_849163.1, 1 a.a. - 237 a.a.) recombinant protein with GST-tag at N-terminal.
Purification:	in vitro wheat germ expression system

Target Details

Target:	RNF166
---------	--------

## Target Details

Alternative Name:	RNF166 ( <a href="#">RNF166 Products</a> )
Background:	Full Gene Name: ring finger protein 166 Synonyms: MGC14381,MGC2647
Gene ID:	115992
NCBI Accession:	<a href="#">NM_178841</a>

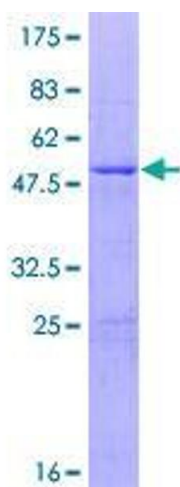
## Application Details

Application Notes:	Optimal working dilution should be determined by the investigator.
Comment:	Preparation method: in vitro, wheat germ expression system Product Quality tested by: 12.5% SDS-PAGE Stained with Coomassie Blue.
Restrictions:	For Research Use only

## Handling

Buffer:	50 mM Tris-HCl, 10 mM reduced Glutathione, pH =8.0 in the elution buffer.
Handling Advice:	Aliquot to avoid repeated freezing and thawing.
Storage:	-80 °C
Storage Comment:	Best use within three months from the date of receipt of this protein.

## Images



**Image 1.**