

Datasheet for ABIN1318285
RNF166 Protein (AA 19-126) (GST tag)



[Go to Product page](#)

1 Image

Overview

Quantity:	10 µg
Target:	RNF166
Protein Characteristics:	AA 19-126
Origin:	Human
Source:	Wheat germ
Protein Type:	Recombinant
Purification tag / Conjugate:	This RNF166 protein is labelled with GST tag.
Application:	ELISA, Western Blotting (WB), Affinity Purification (AP), Antibody Array (AA)

Product Details

Purpose:	RNF166 (Human) Recombinant Protein (Q01)
Sequence:	GPAGGDSGLE AQYTCPILE VYHRPVAIGS CGHTFCGECL QPCLQVPSPL CPLCRLPFDP KKVDKATHVE KQLSSYKAPC RGCNKKVTLA KMRVHISSCL KVQEQMAN
Characteristics:	Human RNF166 partial ORF (NP_849163.1, 19 a.a. - 126 a.a.) recombinant protein with GST-tag at N-terminal.
Purification:	in vitro wheat germ expression system

Target Details

Target:	RNF166
Alternative Name:	RNF166 (RNF166 Products)

Target Details

Background: Full Gene Name: ring finger protein 166
Synonyms: MGC14381,MGC2647

Gene ID: 115992

NCBI Accession: [NM_178841](#)

Application Details

Application Notes: Optimal working dilution should be determined by the investigator.

Comment: Preparation method: in vitro, wheat germ expression system
Product Quality tested by: 12.5% SDS-PAGE Stained with Coomassie Blue.

Restrictions: For Research Use only

Handling

Buffer: 50 mM Tris-HCl, 10 mM reduced Glutathione, pH =8.0 in the elution buffer.

Handling Advice: Aliquot to avoid repeated freezing and thawing.

Storage: -80 °C

Storage Comment: Best use within three months from the date of receipt of this protein.

Images

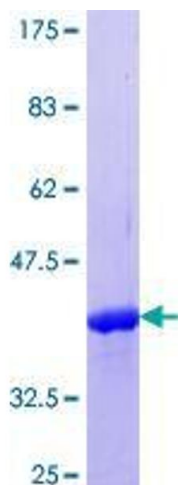


Image 1.