

Datasheet for ABIN1318323
RNF186 Protein (AA 1-227) (GST tag)



[Go to Product page](#)

1 Image

Overview

Quantity:	10 µg
Target:	RNF186
Protein Characteristics:	AA 1-227
Origin:	Human
Source:	Wheat germ
Protein Type:	Recombinant
Purification tag / Conjugate:	This RNF186 protein is labelled with GST tag.
Application:	ELISA, Western Blotting (WB), Affinity Purification (AP), Antibody Array (AA)

Product Details

Purpose:	RNF186 (Human) Recombinant Protein (P01)
Sequence:	MACTKTLQQS QPISAGATTT TTAVAPAGGH SGSTECDLEC LVCREPYSCP RLPKLLACQH AFCAICLKL LCVQDNTWSI TCPLCRKVTA VPGGLICSLR DHEAVVGQLA QPCTEVSLCP QGLVDPADLA AGHPSLVGED GQDEVSANHV AARRLAAHLL LLALLIILIG PFIYPGVLRW VLTFIIALAL LMSTLFCCLP STRGSCWPSS RTLFCREQKH SHISSIA
Characteristics:	Human RNF186 full-length ORF (NP_061935.1, 1 a.a. - 227 a.a.) recombinant protein with GST-tag at N-terminal.
Purification:	in vitro wheat germ expression system

Target Details

Target:	RNF186
---------	--------

Target Details

Alternative Name:	RNF186 (RNF186 Products)
Background:	Full Gene Name: ring finger protein 186 Synonyms: FLJ20225,RP11-91K11.1
Gene ID:	54546
NCBI Accession:	NM_019062

Application Details

Application Notes:	Optimal working dilution should be determined by the investigator.
Comment:	Preparation method: in vitro, wheat germ expression system Product Quality tested by: 12.5% SDS-PAGE Stained with Coomassie Blue.
Restrictions:	For Research Use only

Handling

Buffer:	50 mM Tris-HCl, 10 mM reduced Glutathione, pH =8.0 in the elution buffer.
Handling Advice:	Aliquot to avoid repeated freezing and thawing.
Storage:	-80 °C
Storage Comment:	Best use within three months from the date of receipt of this protein.

Images

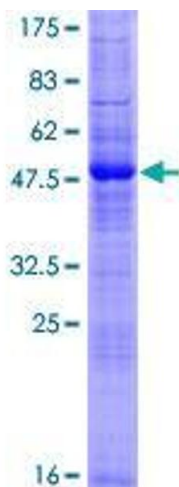


Image 1.