



[Go to Product page](#)

Datasheet for ABIN1318335

RNF207 Protein (AA 1-244) (GST tag)

1 Image

Overview

Quantity:	10 µg
Target:	RNF207
Protein Characteristics:	AA 1-244
Origin:	Human
Source:	Wheat germ
Protein Type:	Recombinant
Purification tag / Conjugate:	This RNF207 protein is labelled with GST tag.
Application:	ELISA, Western Blotting (WB), Affinity Purification (AP), Antibody Array (AA)

Product Details

Purpose:	FLJ46380 (Human) Recombinant Protein (P01)
Sequence:	MSGAIFGPLE GPSSLDAPSI HPLVCPLCHV QYERPCLLDC FHDFCAGCLR GRATDGR LTC PLCQHQTVLK GPSGLPPVDR LLQFLVDSSG DGVEAVRCAN CDLECSEQAG AAGR VGEEQR VPGCTVPNAC TCTQHVFRRGR PGSGFSSTSL GHLGPKCEPH YTGGETEVQN KGLEPVSQRW QRLRPFDLGR AHWSPIQGGV VDLHRRGSPV CRPGPTLKGL CYPGIEAAT AQGRWGQH AVPSGL
Characteristics:	Human FLJ46380 full-length ORF (ENSP00000344316, 1 a.a. - 244 a.a.) recombinant protein with GST-tag at N-terminal.
Purification:	in vitro wheat germ expression system

Target Details

Target:	RNF207
---------	--------

Target Details

Alternative Name:	RNF207 (RNF207 Products)
Background:	Full Gene Name: ring finger protein 207 Synonyms: C1orf188,FLJ32096,FLJ46380,FLJ46593
Gene ID:	388591

Application Details

Application Notes:	Optimal working dilution should be determined by the investigator.
Comment:	Preparation method: in vitro, wheat germ expression system Product Quality tested by: 12.5% SDS-PAGE Stained with Coomassie Blue.
Restrictions:	For Research Use only

Handling

Buffer:	50 mM Tris-HCl, 10 mM reduced Glutathione, pH =8.0 in the elution buffer.
Handling Advice:	Aliquot to avoid repeated freezing and thawing.
Storage:	-80 °C
Storage Comment:	Best use within three months from the date of receipt of this protein.

Images

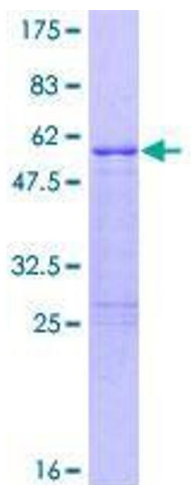


Image 1.